

The background image is a high-quality photograph of a modern residential interior. It features a kitchen island with a white countertop and a large, ribbed glass vase filled with green plants. In the background, there are two large windows with white frames. To the right, a long, low bookshelf is filled with books. The overall aesthetic is clean, bright, and contemporary.

Company Profile - Residential

01/11/2022

MWS
ARCHITECTS

Contents

Introduction	7
People	8
Company Structure	11
Innovation	12
Our Systems	13
Sustainable Practice	14
Digital Fabrication	15
Projects Types	16
Projects	18
Project List	26
Exhibitions & Publications	28
Recognition	29
Referees	30
Referee Reports	31
Insurance	36
Contact Details	37

Introduction



Bell Street Residence

MvS Architects is a globally recognised, award-winning and widely published architectural practice based in Melbourne in its eighteenth year of practice.

We undertake a variety of project types, and have expertise in delivering public buildings up to \$5m; have completed design and documentation on projects valued up to \$40m; and master-plans for projects over \$100m. Recent projects have focused on social and economic development through cultural heritage strategy, creating buildings with extensive interpretive content with environmental and ecological themes, and adaptive reuse. Our buildings have been constructed in dense cities, sensitive environmental locations, have significant landscape components and have incorporated the highest level of sustainable design practice.

MvS Architects approach each project as a unique set of problems and opportunities requiring a tailored innovative approach. We work closely with our clients and consultants to find exemplary solutions that are not always obvious. The MvS Architects' design methodology emphasises both extensive research and engagement with all project stakeholders. Our designs consistently surprise and delight our clients and their constituents.

MvS Architects has received awards from the Australian Institute of Architects for the Victorian College of the Arts Centre for Ideas, Southbank

in 2004, the Australian Wildlife Health Centre, Healesville Sanctuary in 2006, Wattle Avenue House, Mildura in 2012 and for Edithvale Seaford Wetlands Discovery Centre, Edithvale in 2012.

MvS Architects has twice been the recipient of the Premiers Design Award in 2008 for the Australian Wildlife Health Centre and the second in 2012 for the Edithvale Seaford Wetlands Discovery Centre.

In 2015 the St Arnaud Street Museum, which we developed with Maudie Palmer AO, received a commendation for Community Engagement in the National Local Government awards and in the same year our project for the Alice Smith School, in conjunction with iPartnership.LCW, was awarded the PAM Category 13 Gold award for collaboration>

In 2018 RMIT New Academic Street (designed in conjunction with Lyons, NMBW, HAW, Peter Maddison and TCL) was awarded in the AIA Victoria architecture awards for: the Melbourne Prize; the Victorian Architecture Medal; the Henry Bastow Award for Educational Architecture; the Joseph Reed Award for Urban Design; the Award for Interior Architecture; and the Award for Sustainable Architecture, and the Daryl Jackson National Award for Educational Architecture; and the National Award for Urban Design

People



Paul Minifie

Director, MvS Architects
Associate Professor, RMIT School of Architecture and Design
PhD (Architecture & Design) RMIT 2011
MArch(Urban Design) RMIT 2002
BArch(Hons 1st class) RMIT 1993
Registered Architect, Victoria

Working exlsusively on MvS public projects, Paul has eighteen years’ experience as a design architect on some of Australia’s most significant public buildings and developments, which have attracted institute and other professional awards.

He has produced significant work including The Centre for Ideas at the VCA, the Australian Wildlife Centre at Healesville Sanctuary, and the Edithvale Seaford Wetlands Discover Centre – all award winning projects that have forged the practice’s innovative reputation. Paul has a masters degree in urban design and a PhD in Design Research, the application of which manifests in the strong urban and research qualities of MvS Architects’ work.

His innovative approach to architectural thinking and his acute powers of communication make him a natural leader in practice and his intellectual generosity empowers clients, peers and colleagues. Through writing he contributes to architectural books and journals and participates annually in the AIA awards process as a judge across a range of categories.

Paul was a founding academic at RMIT’s Spatial Information Architecture Laboratory and subsequently RMIT’s School of Architecture & Urban Design’s D__Lab. He is currently a project based, and post-professional, PhD supervisor in the RMIT School of Architecture and Urban Design, and chair of RMIT’s annual European Practice Research Seminar.

RECENT EXPERIENCE

- RMIT New Academic Street
- Alice Smith School (JB) KL
- Alice Smith School (EP) KL
- Wattle Avenue House, Mildura
- Melbourne Water Wetlands Discovery Centre, Edithvale-Seaford
- Harbour Esplanade, Melbourne Docklands
- Palm Deira Corniche, Dubai
- Carlton Brewery Redevelopment, Carlton
- Australian Wildlife Centre, Healesville Sanctuary
- Maribyrnong Deakin University Plateau Courtyard, Burwood
- Saatchi and Saatchi Gallery, Sydney
- Victorian College of the Arts Centre for Ideas, Library & Union, Melbourne
- RMIT University Media Centre, Union Facilities & Student Hub, Melbourne
- China Coal Economic College, Yantai China (competition, finalist)
- Yarra’s Edge Windscreens, Melbourne Docklands (competition, finalist)
- Docklands Design Frameworks, Victoria Harbour and North West Precinct
- Marina Line Underground Railway, Singapore (competition, finalist)
- RMIT Swanston St Façade, Melbourne (competition, winner)
- Circular Quay Train/Ferry Terminal Redevelopment, Sydney (competition, commendation)



Jan van Schaik

Director, MvS Architects
Senior Lecturer, RMIT School of Architecture & Design.
PhD (Architecture & Design) RMIT 2015
BArch (Hons 1st class) RMIT 2004
Registered Architect, Victoria

Jan’s has two decades of experience designing award winning prototypical public and residential buildings, leading innovative research projects, and supporting contemporary arts organisations through patronage and governance.

Arising from an interest in the complex relationship between human beings and their environments, Jan’s work focuses on the cultural and societal underpinnings of architecture.

His designs of public buildings; mixed-use hubs; strategic plans; feasibility studies; master-plans; secondary and tertiary education projects; adaptive reuse projects; exhibitions in major art galleries; artworks; buildings in sensitive ecological environments; and prototypical residential projects have received awards, and been published in Australia and internationally.

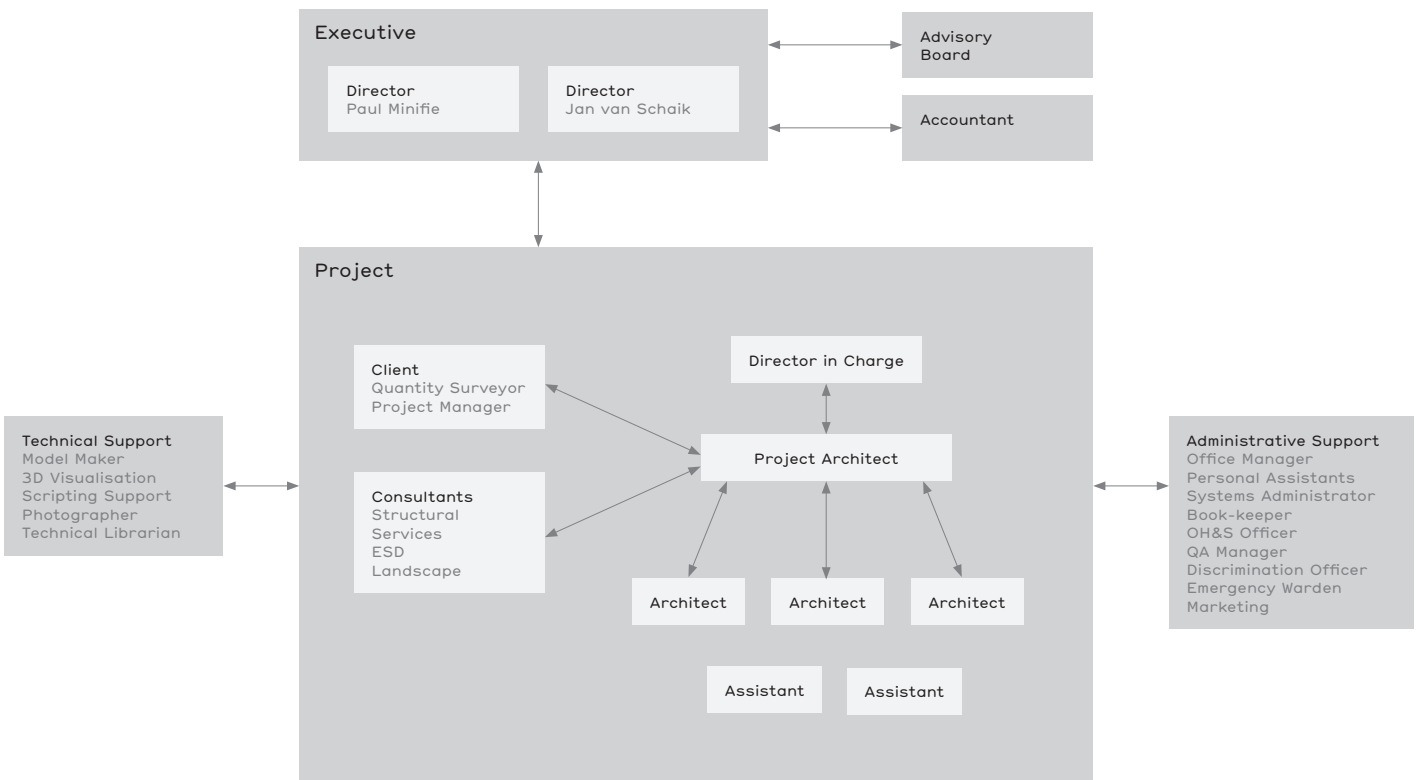
Jan is the designer of Lost Tablets, a series of works which explore the mysteries of human existence by exploiting a tension between a universally recognisable children’s toy and the grammar of architectural symbols.

Jan is the producer of the *WRITING & CONCEPTS* public performance and publication series which reflects on the internal workings of creative practice. Established in 2016, the series has been hosted by multiple arts organisations, primarily in Melbourne and Victoria alongside national organisations in Canberra, New South Wales and South Australia.

RECENT EXPERIENCE

- Bell Street Residence
- Bligh Place Apartment
- Geelong Wool Museum Vision
- RMIT New Academic Street
- Wildlife Art Museum of Australia, Halls Gap
- Halls Gap Master-plan
- Hevea Tower, KL
- St Arnaud Civic Precinct Plan
- LGM Master-plan
- Alice Smith School (JB) KL
- Alice Smith School (EP) KL
- Wattle Avenue House, Mildura
- Emoh Ruo, Mildura / London
- Cafe Bourgeois, Docklands
- 59a Bourke Street, Melbourne
- Al Mudheef Development, Al Ain
- Sugar Station Kiosks, Melbourne
- Palm Deira Corniche, Dubai
- Carlton Brewery Redevelopment, Carlton
- Melbourne Water Wetlands Discovery Centre, Edithvale-Seaford
- Harbour Esplanade, Melbourne Docklands
- Victorian College of the Arts Centre for Ideas, Library & Union, Melbourne
- China Coal Economic College, Yantai China (competition, finalist)
- Yarra’s Edge Windscreens, Melbourne Docklands (competition, finalist)
- Docklands Design Frameworks, Victoria Harbour and North West Precinct
- Marina Line Underground Railway, Singapore (competition, finalist)
- RMIT Swanston St Façade, Melbourne (competition, winner)
- Circular Quay Train/Ferry Terminal Redevelopment, Sydney (competition, commendation)
- OverLogo, (with Lou Weis)

Company Structure



Innovation



Bell Street Residence

Research is a core activity at MvS Architects. We approach each project as an individual set of conditions. Although we bring expertise to bear on each commission we also believe that every project is unique and will benefit from a careful investigation of the circumstances particular to each commission and client. This approach allows us to understand the specific needs of a client and the set of conditions framing a project. It enables us to deliver an individual solution and to imagine each project as an opportunity to produce insight into a particular client body, its brief and circumstances.

The principals of MvS Architects have a long-standing relationship with a university research facility - RMIT University. Through teaching and research we pursue the process of design as a research activity.

This encompasses a broad spectrum, from specific architectural problems of form making, to the possibilities offered by new computer generated programs, to the changing needs and shape of contemporary social and cultural conditions. Our strong research base enables us to offer optimal solutions to each given problem.

Our Systems



Bell Street Residence

MvS Architects' quality assurance systems deliver a consistent set of outcomes over a range of projects to meet client needs and expectations with the highest level of professional service.

Planning and policy strategy set by the senior management team define outcomes which processes are then designed to deliver. These processes are then disseminated to staff through training and the office manual. This manual provides specifically designed work methods and access to AIA practice notes to ensure consistency with industry standards.

Schedules, time lines and check-lists are regularly maintained to ensure value management across all areas of quality, time and cost. Production costs are monitored with a tailored on-line time sheet and job-tracking system.

Post-project reviews collate working records and capture knowledge from team members, sub-consultants and clients.

The skills bank of the office is regularly reviewed with training and professional development made available when required. Regular work flow and staff reviews are carried out to ensure the effectiveness of this training.

Standardised hard and soft copy file structures, document naming, revision management, transmittal system and chronological records of correspondence received and issued from the office ensure straightforward tracking of information.

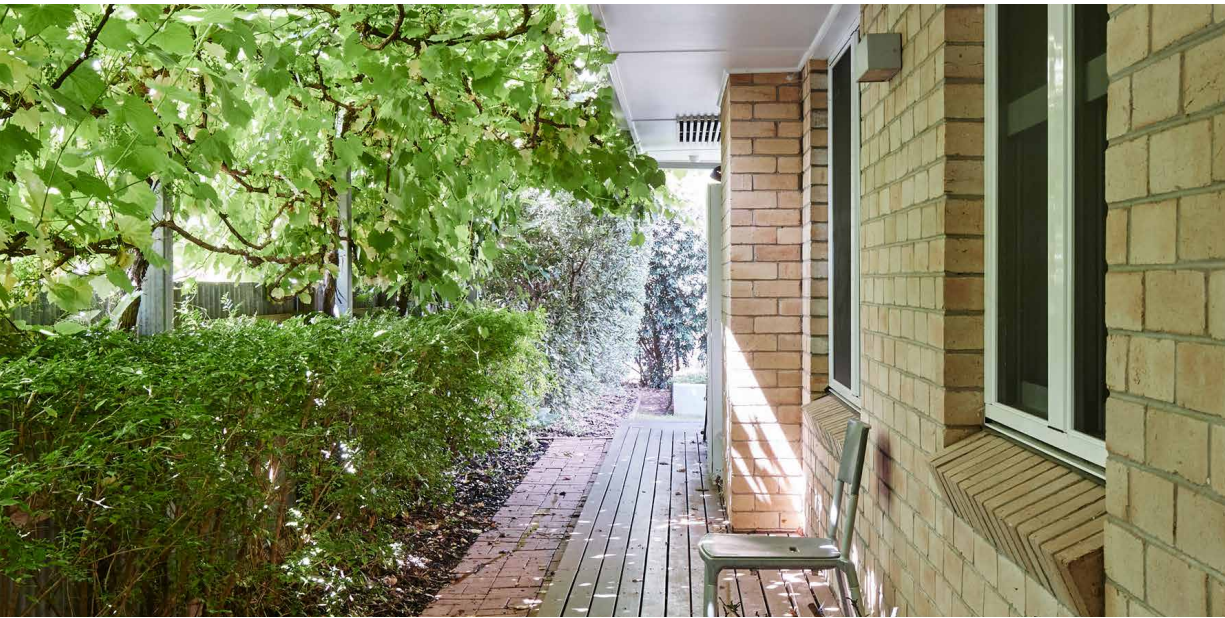
Our password protected extra-net reveals job specific sections of office procedures, contact lists, minutes, tasks and transmittals to specific consultants on a job by job basis, and allows for unification of working systems across all consultants.

Weekly off-site backups safeguard against the unlikely event of accident or technical failure.

The office manual is reviewed on a six monthly basis and edited to incorporate knowledge captured through project-reviews. MvS Architects' quality assurance systems are themselves reviewed on an annual basis.

Our working environments, and the environments we design, are managed and monitored through our occupational health and safety, equal opportunity, sexual harassment, worksafe and work/life balance policies.

Sustainable Practice



Wattle Avenue House

MvS Architects is a sustainable practice embracing environmentally sustainable design and development recognising its immediate local impact, and its global one. We have the skills and knowledge to capitalise on natural passive design as well as standard and new technological innovations to address recycling, energy usage, water consumption, material selection, energy embodiment, natural ventilation and the effective and healthy use of working and learning environments.

MvS Architects can advise its clients on how to achieve green star ratings on projects by carefully assessing the up-front costs versus the long term benefits of sustainable design.

For example, the roof of the Australian Wildlife Centre at Healesville Sanctuary is designed to work as a 'solar chimney', removing hot air from inside to provide passive ventilation to the gallery space, and so removing the need to air-condition.

The Melbourne Water Edithvale-Seafood Wetlands Discovery Centre is autonomous from all service grids. To achieve this we have included photo voltaic cells with storage batteries, internal water tanks as integrated thermal mass, composting toilets, wind catchers, natural ventilation, hydronic heat exchange heating and cooling and no air-conditioning.

Our 11 storey multi-residential and retail project within Grocon's Carlton Brewery Development was designed to achieve a 5 star green star rating applying the principles of cross ventilation, the use of a tri generation plant, access to planted outdoor space, energy efficient appliances all of which are designed to operate as a cohesive system.

MvS Architects is Greenstar accredited.

Digital Fabrication



Wattle Avenue House

Digital technologies and fabrication processes are a core aspect of the design and delivery philosophy at MvS Architects. Three-dimensional modelling and visualization, generative form finding, engineering analysis, project management and file-to-factory production are among the ways MvS Architects utilises state-of-the-art technologies in our practice.

Examples of how MvS Architects has employed these technologies can be found in the design and co-ordination of two key elements in the Australian Wildlife Centre at Healesville Sanctuary. The 'solar chimney' was realised formally through complex digital modelling of a mathematical surface. The zebra-like brick facade of the Wildlife Centre was generated by developing an algorithm that emulates patterns found in nature. Digital tools were also employed in the construction of the chimney, with fabrication drawings produced directly from optimised design models developed in collaboration with the contractor.

Digital modelling and fabrication technologies were also employed in the facade of the VCA Centre for Ideas. The intersecting conical surfaces, designed to be flattened out, are constructed out of the same two dimensional prefabricated panel sheet, before being moulded to the same curvature. The panels are then cut using computer controlled laser cutting, allowing for a complex facade to be fabricated with remarkable efficiency.

Similarly, we employed these technologies in the delivery of our latest public building, the Edithvale-Seafood Wetlands Discovery Centre. Digital models for structural and thermal analysis were produced for collaboration with engineers. 3-D digital steel shop models were cross checked with design models, and digital tools were used to design, prototype and fabricate panels for the facade.

Project Types

Residential

Since 2007 we have undertaken a series of projects of a residential nature. Our house for Stefano de Pieri and family picked up an architecture award and was featured on the ‘Sacred Spaces’ TV Series. We redesigned an apartment in, and the foyer of, the

iconic Hero Apartments in Melbourne’s CBD. The design of an apartment and a double storey terrace, both in heritage listed buildings. Our residential projects include the curating of art, detailed furniture design, and bespoke lighting solutions.

Regional Cultural Development

We have an expansive interest in the development of regional Victoria. Our feasibility study for the a new Shepparton Art Museum has now been adopted by its Shire. The St Arnaud Street Museum, developed in conjunction with Maudie Palmer AO, was awarded a commendation for engagement in the 2015 National Awards for Local Government. We have produced a schematic design, and advocated for, the Wildlife Art Museum of Australia in Halls

Gap where we have also delivered a Tourism and Public Land Use Development Masterplan. We are currently producing a Cultural Facilities Vision for the Mount Alexander Shire in Castlemaine and have been extensively involved in the development of the Australia Felix Museum of Arts, Culture and History with a local community group and the Shire in Hamilton.

Urban Design

Our work is underpinned by urban design. Our projects, large or small, are designed to improve their physical, environmental, demographic, cultural and economic context. In many instances this is achieved through the vehicle of a specific urban design or

master-planning commission and we count as clients in this area Zoos Victoria, Melbourne Water, Places Victoria, The City of Geelong, Nakheel, TDIC, The Dehan Group, the Shengjing Group and the Department of Treasury and Finance.

Education

In the educational sector we count among our clients the University of Melbourne, Deakin University, RMIT University and the Alice Smith School. Also our projects for Melbourne Water and Zoos Victoria perform non-curriculum based educational functions. For a number of different project types we have addressed briefs containing complex mixes

of public function, research facilities, teaching spaces and administrative offices; all required to address the needs and ambitions of the university executive, facilities managers, colleges, departments and students so as to create cohesive learning and research environments.

Multi-Residential

Since 2007 we have undertaken a series of projects of a residential nature. Our house for Stefano de Pieri and family picked up an architecture award and was featured on the ‘Sacred Spaces’ TV Series. We redesigned an apartment in, and the foyer of,

the Hero Apartments. Included here is also a multiple-housing project that encapsulates some of what we learned during schematic design of the Swanston Square project for Grocon in 2008.

Commercial

Our commercial clients include an airport development company, retail and commercial developers, government departments, retail chains, construction companies and an advertising company. We create unique solutions to their needs, paying particular attention to their own clients - in doing

so we can tailor their products to their markets, environments, and for well-being and productivity. With our commercial clients we create built assets that express their histories and strategic aspirations.

Retail

Our retail experience ranges from a single cafe in Melbourne’s Docklands to the planning of a mega-mall on reclaimed land in a marina development in Qinduandao, China. Many of our educational projects have retail components, as did the mixed-use project that we prepared schematic design for, in Grocon’s.

Swanston Square development. Our work for the Sugar Station chain required the development of a robust design language to provide brand consistency between an eclectic set of locations while meeting the constraints of high traffic shopping.

Art Spaces

We have been working with artists and arts administrators at design and governance levels for over 12 years. Recently we have designed a series of exhibitions in collaboration with curators. Art is necessarily privileged in a gallery, and to support this, architecture must to some extent recede.

However, through our work with curators we have been developing ways of enhancing the themes and ambitions of curators and galleries in a more spatially explicit way without disturbing the importance place that art occupies in our cultural institutions.

Art Works

We have been working with artists for over a decade. Paul Minifie is a member of the public art acquisition committee of RMIT University, Jan van Schaik was deputy chair of Gertrude Contemporary Art Spaces for six years and is now the chair of Creative Spaces which curates and develops affordable space for the

creative industries in the City of Melbourne. Jan is also an advisor to Regional Arts Victoria’s Small Town’s Transformation project and a board member of Palimpsest Mildura Art Biennale. Included here are a few of the projects we’ve done with artists.

Public Buildings

We have been in the business of designing public buildings since 2000, approaching each project as unique set of problems and opportunities requiring a tailored and innovative approach. Amongst our public clients we count The Victorian College of the Arts at Melbourne University, Melbourne Water and Zoos Victoria. We have also conducted studies

for Places Victoria, the Department of Treasury and Finance, Mildura Rural City Council, RMIT University and Deakin University. We work closely with our clients and consultants to find exemplary solutions that are not always obvious. Our designs consistently surprise and delight our clients and their constituents.

Super Table

Residential

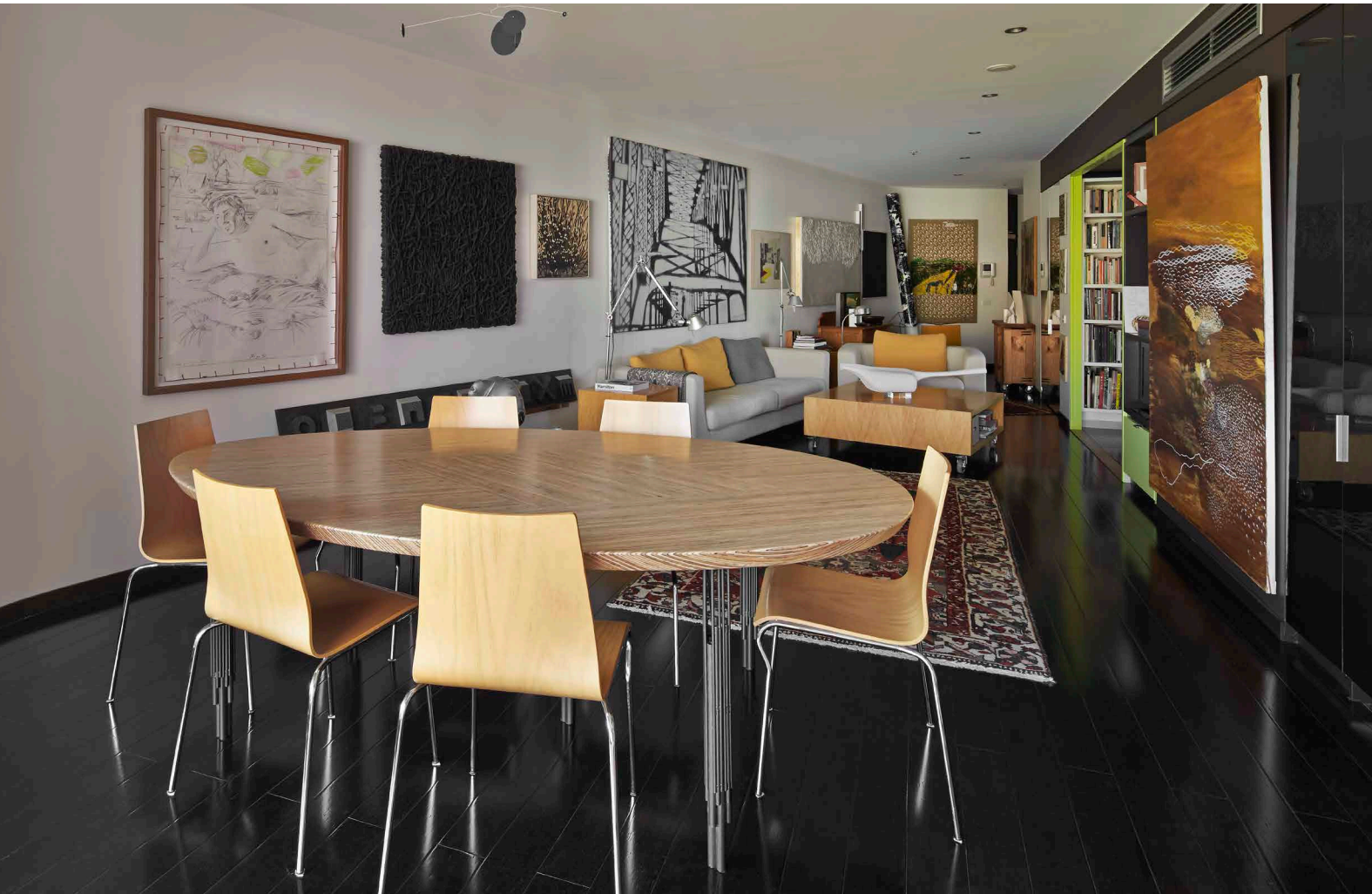
MELBOURNE

CLIENT: MULTIPLE

DATE: 2014

PHOTOGRAPHY:

PETER BENNETTS



A luscious solid lumber ellipsoid timber table with punchy Art Deco-esque steel legs.

This super-ellipse shaped table, of solid laminated European Pine sealed with a satin finish, allows for six people to be generously seated at a time. The grain of the timber is turned upwards, exposing the timber's laminations which distort as they navigate the table's edge.

The legs are a hybrid between an Art-Deco tower and a fascies, and are finished in automotive black paint. At the base of each, three large steel rods meet the floor, separated from it by a pad of felt. At their zenith, the steel rods decrease in diameter, becoming a collection of delicate fingers

holding up the solid timber top.

The center piece of the table's composition is a diamond shape with its grain reversed. Its dimensions record the original width of the single standard Timber sheet from which the table is made.



Wattle Avenue House

Residential

MILDURA CBD, 2010 - 2011

CLIENT: STEFANO DE PIERI & DONATA CARRAZZA

PHOTOGRAPHY:
PETER BENNETTS



A transformation of a 1960s cream brick house into a spacious home with a courtyard, library, four bedrooms, three bathrooms, two kitchens and two gardens for the de Pieri family.

This prototypical regional dwelling tells a story of the place in which it is located.

A highly decorative tiled entry shades the front door, setting the scene for the journey through the house.

The internal courtyard is

bracketed by a coloured glazed brick wall that continues into the main living area, concealing a study and the master bedroom.

Large sliding doors separate the living area from an internal courtyard, creating a hybrid indoor/outdoor space. A double glazed clerestory window runs

the length of the house beneath an expressed eave.

The house was awarded an Australian Institute of Architects award for Residential Alterations and Extensions in 2012 and was featured in the Australian television series "Sacred Spaces" in 2012.



Bligh Place

Residential

MELBOURNE, 2018

CLIENT: ELLIE RENNIE AND JASON POTTS

PHOTOGRAPHY:

PETER BENNETTS



An apartment in a small inner city apartment building transformed with a few clever changes.

This apartment was once compromised by a cramped kitchen, a tired and poorly planned bathroom, and a shortage of wardrobe and storage space.

Our redesign effected a wholesale change to the look, feel, and livability of all the spaces. We transformed what was once a tolerated apartment fit-out into a much loved home.

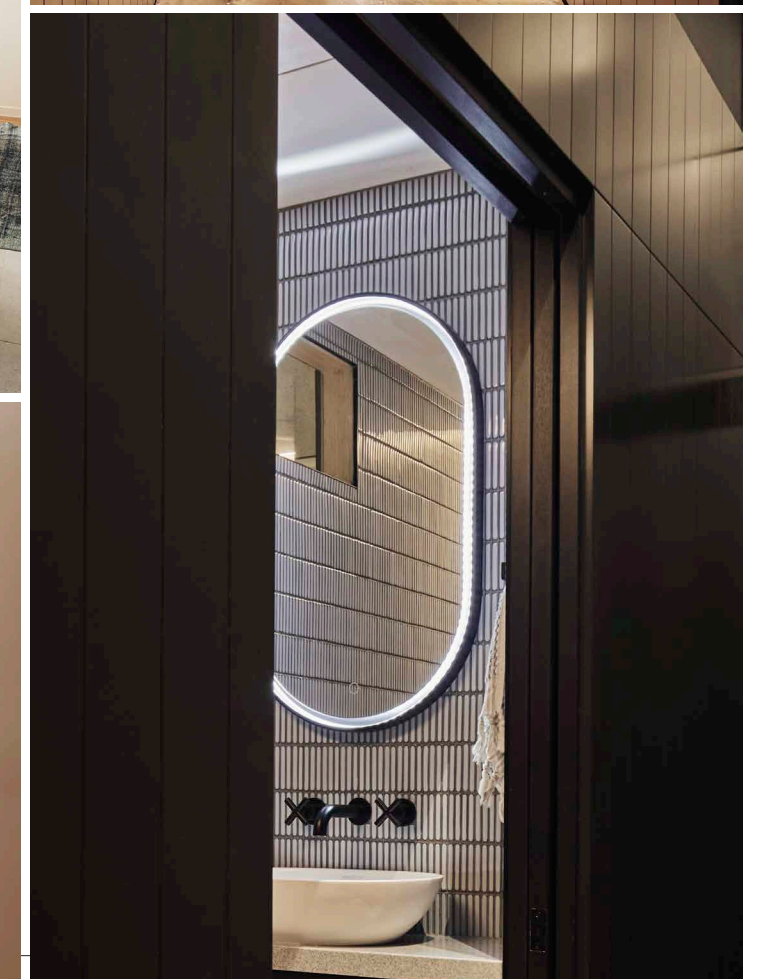
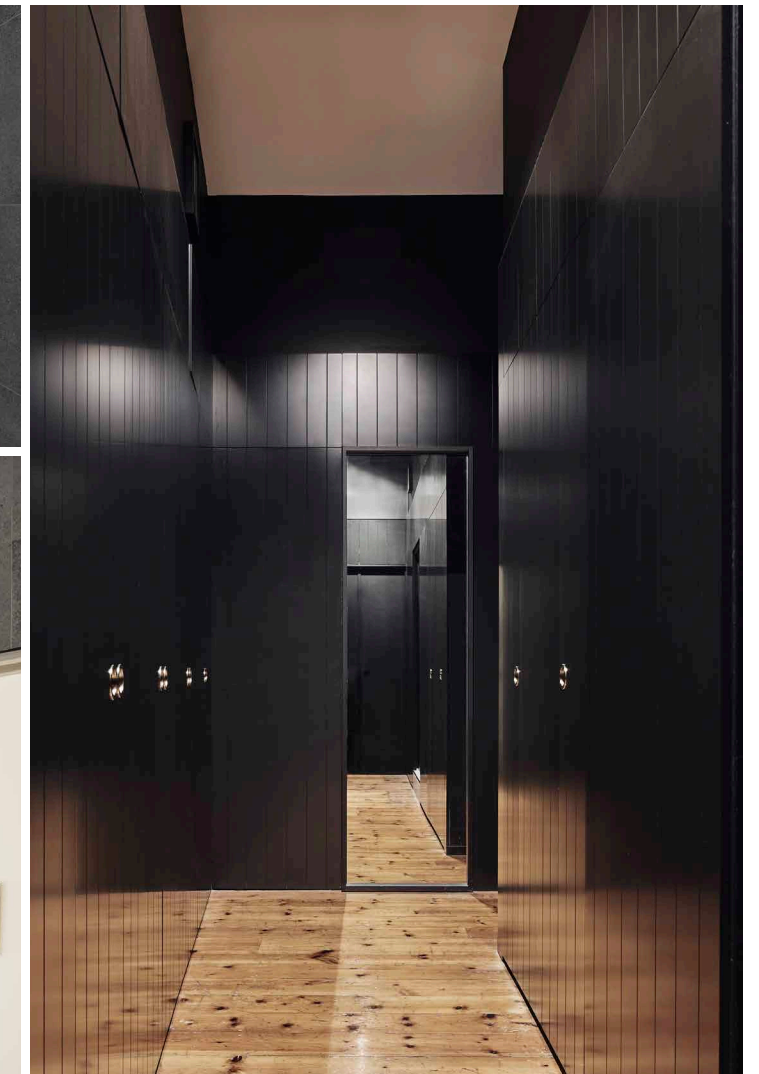
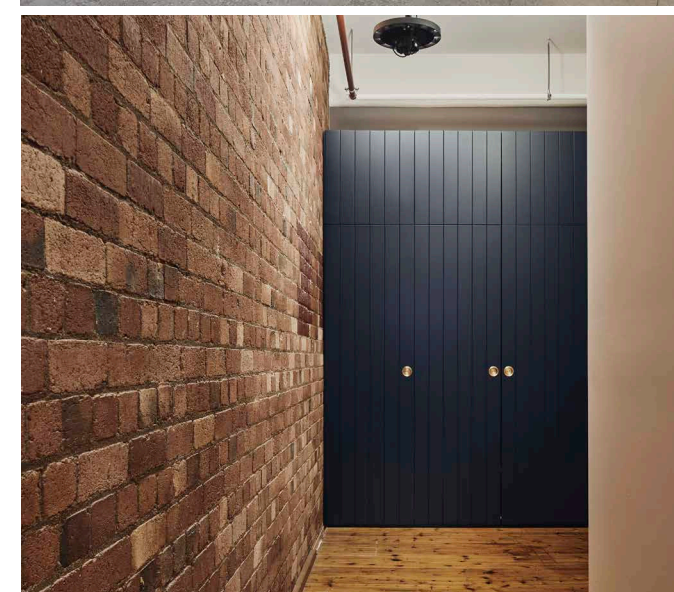
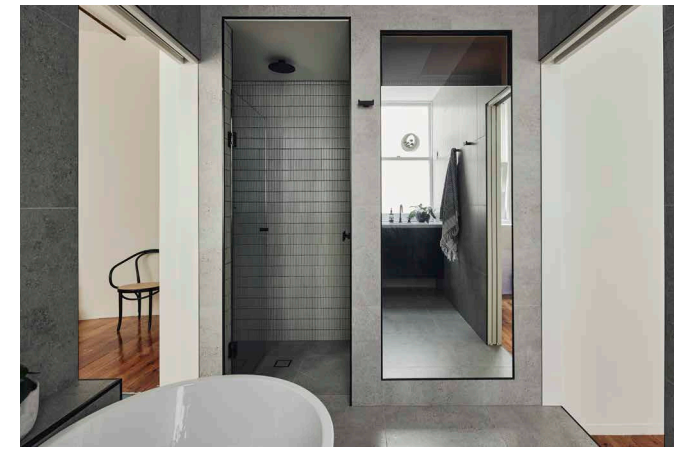
By retaining the location of original services and appliances, by changing the position and orientation of openings without moving walls, and by identifying under utilised space in the entry corridor in which to build new joinery units, we were able to create a dramatic transformation on a limited budget.

Our design includes a bespoke lighting solution, a large

walkthrough wardrobe, an independently accessible powder-room, and a hotel-style bathroom with a free-standing bath and luxurious shower space.

The art of this design lies in the transformation from of a once cramped apartment with limited functionality to one with increased functionality fitting effortlessly in to the same space.

22



Bell Street

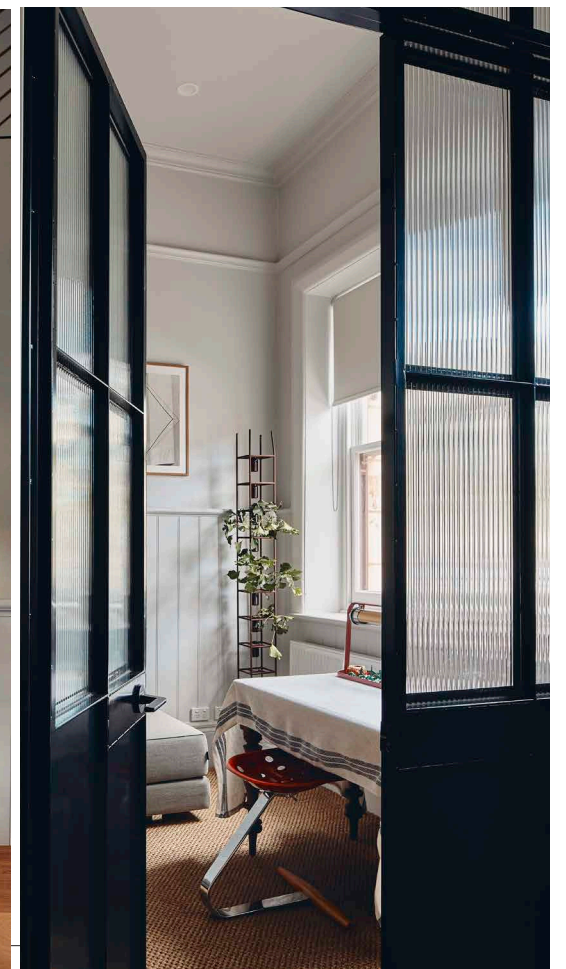
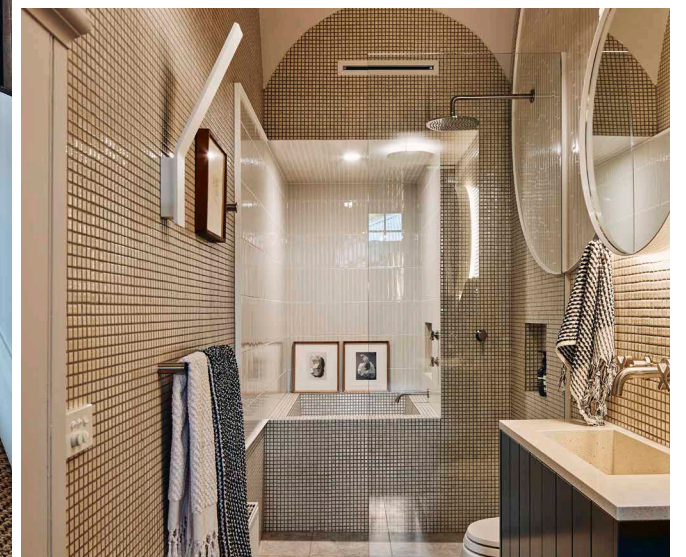
Residential

FITZROY 2019

CLIENT: CATHERINE PIERCE

PHOTOGRAPHY:

PETER BENNETTS



A total transformation of a former school into a luxurious two level residence and leafy garden in a heritage listed building.

This design for a two storey home in a heritage registered Victorian-era former school includes a generous upper level open space with a below-bench kitchen that provides full functionality for a client who loves to cook and cater.

The ground floor is crafted to include two bedrooms, each

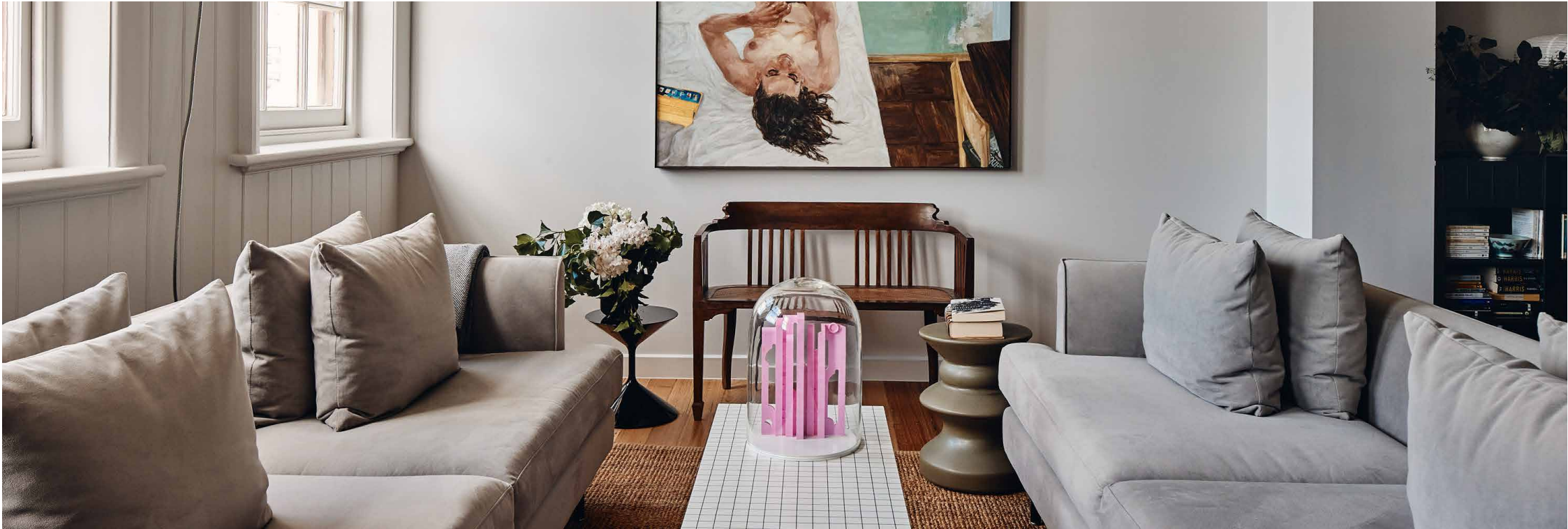
with its own en-suite, a separate powder room, a dedicated laundry space, and ample space for the client's much loved collection of furniture and art.

Our design includes custom designed steel doors with fluted glass, and a bespoke lighting solution.

The main bedroom and bathroom ceilings are elegantly vaulted and the bathrooms are lined with hand-made Japanese tiles.

The plan of this project makes clever use of space to include more functionality than the dimensional constraints of the building should allow for.

Projects List

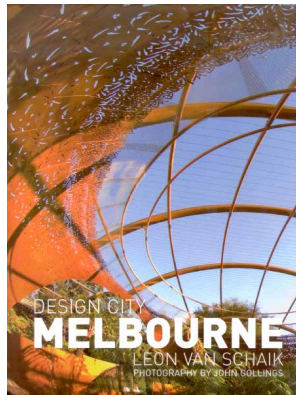


Bell Street Residence

- National Wool Museum visioning and UNESCO alignment
- Bingham Road Private Art Studio Complex
- Colac Office and Cultural Needs Assessment
- Bell Street House
- Hamilton Gallery Service Review
- Whittlesea Culture Strategy
- Bligh Place Apartment
- Kimberley Center Feasibility Study
- Inner West Creative Industries Hub Research
- Mornington Peninsula Regional Gallery Redevelopment
- Exclusive Mutations Advanced Manufacturing Research
- Wildlife Art Museum of Australia
- Halls Gap Master-plan
- Shepparton Art Museum Feasibility Study
- Castlemaine Cultural Facilities Vision
- St Arnau d Civic Precinct Plan
- Alice Smith School, KL
- Hevea Tower, KL
- LGM Master plan, KL
- RMIT New Academic Street, Melbourne
- Hero Lobby Upgrade, Melbourne
- Dehan Hotel City, Tianjin
- Star Voyager, ACMI
- Parallel Collisions
- We used to talk about love
- Dying in Spite of the Miraculous
- Super-Yacht City, Qinhuangdao
- Emoh Ruo, London / Mildura
- Eastern Park & Geelong Botanical Gardens Vistor's Centre
- Cafe Bourgeois, Melbourne Docklands
- About Face, 2009 Think Brick Competition
- 59a Bourke Street, Melbourne

- Apartment 905, Melbourne
- The New Harbour Esplanade, Melbourne Docklands
- Palm Diera Corniche, Dubai
- Sugar Station Confectionary chain, Melbourne
- Carlton Brewery Development, Melbourne
- Australian Wildlife Centre, Healesville Sanctuary, Melbourne
- Entrance Pavilion, Healesville Sanctuary, Melbourne
- Wetlands Discovery Centre, Edithvale, Victoria
- Wetlands Discovery Centre Master Plan, Edithvale, Victoria
- The Keys to Mildura
- Vietnamese Cultural & Community Centre, Maribyrnong
- Valley Lake EcoHousing, Niddrie
- Datum Regalia, KL
- Sustainable Housing (International Competition, Finalist)
- Steaming House, Beijing Art Biennale
- City of Skyscrapers (Competition, Winner), Ljublana
- Saatchi & Saatchi, Lobby/Gallery, Sydney
- Millennium Hilton Ballroom & Function Centre, Bangkok
- Millennium Hilton Health Club, Bangkok
- Deakin University Courtyard, Burwood
- OverLogo Installation, Melbourne
- Over and Over Installation, Melbourne
- Melbourne University Museum Courtyard, Melbourne
- Victorian College of the Arts Centre for Ideas, Melbourne
- Victorian College of the Arts Library, Melbourne
- Victorian College of the Arts Union Facilities & Cafeteria, Melbourne
- Docklands Design Frameworks, Vic Harbour, Yarra Waters and North West Precincts, Melbourne
- University of Sydney Public Domain (Competition, Finalist) Sydney
- Grand Egyptian Museum (Competition, Exhibited), Egypt
- Shuishhe Waterfront Park (Competition) Taiwan
- Yantai Coal Economic College (Competition, Finalist) China
- Yarra's Edge Windscreens, (Competition, Finalist) Melbourne

Exhibitions & Publications



- 2015 “Africa Design Magazine”, Alice Smith School
- 2015 “Arch Daily”, Alice Smith School
- 2015 “Architecture smd Culture” Korea, Alice Smith School
- 2015 “Architecture Australia”, Alice Smith School
- 2014 “Augmented Australia”, The Australia Pavillion, The Venice Biennale of Architecture
- 2014 “Luchbox Architect” Alice Smith School
- 2013 “Convergence” Wattle Avenue House
- 2013 “Cities of Hope” RMIT Storey Hall Gallery
- 2013 “New Suburban” Stuart Harrison, published by Thames and Hudson
- 2012 “Momentum. New Victorian Architecture” The Office of Victorian Government Architect, published by Miegunyah Press
- 2012 “Wattle Avenue House” Robert Nelson , Houses Magazine, Issue 88 2012
- 2012 “Leaning to Past Designs” Ann Pilmer, The Age Newspaper, August 19th 2012
- 2012 “Inspired by Region: House wins award” Allyson Fonseca, Sunraysia Daily, August 15th 2012
- 2012 “Inspired by the Hides of Marsh” Joe Rollo, The Age Newspaper, April 13th 2012
- 2012 “Wandering Between the Lines” Dylan Rainforth, The Age Newspaper, April 4th 2012
- 2012 “With All the Views” Paul Carter, Architecture Australia Volume 101 March April 2012
- 2012 “Our “Home-for-All” Design ideas, plans and all” Catalogue for “A See-Worthy Vessel” Imbari, Toyo Ito Museum of Architecture
- 2010 “Machinic Processes” 2010 Beijing Biennale
- 2010 “Emoh Ruo, The Global Practices of Australian Architecture” Bridge Gallery, London
- 2009 Post Oil Cities “Reverse Engineering” by Jan van Schaik
- 2009 “Transformations” Moving Galleries, Melbourne
- 2009 “Razmisleki o arhitekturi, razmisleki o arhitektih”, DESSA Gallery, Ljubljana
- 2009 “Abundant Highlights Exhibition”, Object Gallery, Sydney
- 2008 “Abundant”, Australian Pavilion, Venice Architecture Biennale
- 2008 “Homo Faber”, Museum of Victoria
- 2008 “(Im)material Processes”, 2008 Beijing Biennale
- 2008 “Unified Design” by Arup Associates, publisher Wiley
- 2007 “Next Wave” by Davina Jackson, publisher Thames & Hudson
- 2006 “Design City Melbourne” by Leon van Schaik, publisher Wiley
- 2006 Architecture Australia “Australian Wildlife Health Centre” Mar/Apr
- 2006 Mark Magazine (Amsterdam) Issue 02 “Letter from Melbourne”
- 2006 “Self Sufficient Housing” publisher Actar
- 2006 “Ten Plus One”
- 2005 “10x10_2 100 Architects, 10 Critics” by Davina Jackson, publisher Phaidon
- 2005 “Mastering Architecture” by Leon van Schaik, publisher Wiley Academy
- 2005 Architectural Review Australia “AR Next”
- 2005 City of Innocence “An urban wager” by Jan van Schaik
- 2005 “Pavilions for New Architecture” Curators Geraldine Barlow and Max Delany
- 2004 Architecture Australia “Saying and Doing” Mar/Apr
- 2004 Colorfulness Magazine (Beijing) “Architecture Expression on City Spirit” Oct
- 2004 Vogue Living “Impressed Metal” Sep/Oct
- 2004 “Downshifters” Jan van Schaik and Paul Minifie
- 2004 “Easily Flooded Architecture” Alain Danilet, Marie Christine Lorier and Sophie Houdart
- 2004 Designing for Success: The Office, Images Publishing, Melbourne.

Recognition



- 2018 Australian Institute of Architects national award, the Daryl Jackson Award for Educational Architecture
- 2018 Australian Institute of Architects national award for Urban Design
- 2018 Australian Institute of Architects Victorian award, the Melbourne Prize
- 2018 Australian Institute of Architects Victorian award, the Victorian Architecture Medal
- 2018 Australian Institute of Architects Victorian award, the Henry Bastow Award for Educational Architecture
- 2018 Australian Institute of Architects Victorian award, the Joseph Reed Award for Urban Design
- 2018 Australian Institute of Architects Victorian award, the Award for Interior Architecture
- 2018 Australian Institute of Architects Victorian award, the Award for Sustainable Architecture.
- RMIT New Academic Street (with Lyons, NMBW, HAW, Peter Maddison, and TCL)
- 2015 Award for Community Engagement in the National Local Government awards
- The St Arnaud Street Museum
- 2015 PAM Award GOLD Category 13 COLLABORATION
- Alice Smith School Jalan Bellamy (with iPartnership.LCW)
- 2012 Premier’s Design Award
- Edithvale Seaford Wetlands and Discovery Centre
- 2012 Master Builders Association - Excellence in Construction Award Victoria,
- Best Sustainable Energy Project
- Edithvale Seaford Wetlands and Discovery Centre
- 2012 Australian Institute of Architects award, New Public Architecture
- Edithvale Seaford Wetlands and Discovery Centre
- 2012 Australian Institute of Architects award, Residential Alterations and Additions
- Wattle Avenue House
- 2008 Premier’s Design Award for Cultural Architecture:
- Australian Wildlife Health Centre, Healesville
- 2007 Grocon CUB Ideas Competition. Carlton Brewery: Winner
- 2007 Te Wero Bridge Competition Auckland, New Zealand: Finalist
- 2007 Preshil Library Competition Melbourne: Finalist
- 2006 RAIA William Wardle Institutional Architecture Award:
- Australian Wildlife Health Centre, Healesville
- 2004 Royal Australian Institute of Architects Institutional Architecture Award:
- Victorian College of the Arts - Centre for Ideas, Melbourne
- 2003 RAIA/Austrade Development Award. For export to the China market
- 2003 University of Sydney Public Domain International Competition, Sydney: Finalist
- 2002 Australasian Campus Union Manager’s Association Award for Best Facility Renovation:
- RMIT Union Hub, Melbourne
- 2002 Yantai Coal Economic College Design Competition Yantai, China: Finalist
- 2002 Yarra’s Edge Windscreens Design Competition, Melbourne: Finalist
- 2000 Marina Line International Design Competition, Singapore: Finalist

Referees (residential)

Stefano de Pieri

Wattle Avenue House
e: stefano@stefano.com.au

Ellie Rennie

Bligh Place Apartment
e: ellie.rennie@rmit.edu.au

Catherine Pierce

Bell Street Residence
e: cpierce@vicbar.com.au

Leon van Schaik

Binghams Road Harcourt
e: leonardusvnschk@gmail.com

Referee Reports



PO Box 74
Parkville
Vic 3052
Australia
T: 61 3 9285 9300
F: 61 3 9285 9330
www.zoo.org.au

23 September 2010

RE: Minifie van Schaik Architects (MvS)

To whom it may concern,

Zoos Victoria is a proud owner and occupier of the Australian Wildlife Health Centre at Healesville Sanctuary designed by Minifie Nixon, now Minifie van Schaik.

AWHC is part veterinary clinic for Australian wildlife, part educational space where we simultaneously care for native fauna and educate the public through demonstration and instruction.

The MvS design cleverly incorporates a giant ventricle at the heart of the building which both acts as a cooling device for the building and advertises the building's function where it neatly pops through the roof.

Visitors to the sanctuary are enamoured by the patterned block work facade and the shaded internal courtyard within which children play and learn.

The project has weathered well in the four years since its completion. Recently MvS was invited to exhibit the project at the Australian Embassy Gallery in Washington D.C. Entitled *BioDiverCity* and for which we worked with them to prepare a beautiful new series of photographs.

Given the opportunity we would gladly engage Minifie van Schaik again.

Yours sincerely,


John Gibbons


Director – Healesville Sanctuary ,



Werribee Open Range Zoo	Melbourne Zoo	Healesville Sanctuary
PO Box 460	PO Box 74	PO Box 248
Werribee	Parkville	Healesville
Vic 3030	Vic 3052	Vic 3777
Australia	Australia	Australia
T: 61 3 9731 9600	T: 61 3 9285 9300	T: 61 3 5957 2800
F: 61 3 9731 9644	F: 61 3 9285 9330	F: 61 3 5957 2870

ABN: 96 913 959 053

Referee Reports



23 September 2012

TO WHOM IT MAY CONCERN

RE: MvS Architects


Melbourne Water worked with MvS Architects between 2006 and 2012 on the Edithvale-Seafood Wetlands Discovery Centre (ESWDC), a flagship ESD interpretive design centre whose purpose is to provide general education about, and views of, the Ramsar listed Edithvale-Seafood wetlands, including its flora and fauna.

MvS Architects were engaged as the principle architecture consultant whose scope covered master-planning, community engagement, schematic design, design development, contract documentation, contract administration, and liaison with landscape architects, exhibition designers, planning consultants, structural/services/ESD engineers and building surveyors.


MvS Architects patiently and skilfully managed the conflicting demands of the various project stakeholders, changing budgets and the complexities of innovation in Environmentally Sustainable Design to deliver a project of which meets the needs and ambitions of Melbourne Water and its clients.

We are very proud, also, to be the owners and occupants of a building that was awarded an Australian Institute of Architects award for Public Architecture in June 2012, a Master Builders Association Award in August 2012 and also the Premier's Design Award in September 2012.

Yours sincerely,



WAYNE CHARLTON
PROJECT MANAGER



Melbourne Water Corporation
100 Wellington Parade
East Melbourne VIC 3002 Australia
PO Box 4342 Melbourne VIC 3001 Australia
Telephone 131 722
Facsimile 03 9235 7200
ABN 81 945 386 953
Printed on Australian 100% recycled paper

Referee Reports

Grocon Property Services (NSW) Pty Ltd
ABN 72 094 605 222 152 Gloucester Street Sydney NSW
2000 Australia. GPO Box 498 Sydney NSW 2001 Australia
Telephone +612 8249 7000 Facsimile +612 9247 7768



22 September 2010

To whom it may concern,

In 2007 an expert panel, with representatives from the Department of Sustainability and Environment, RMIT University and Grocon, awarded Minifie Nixon Architects the commission to design an eleven storey 1500m² floor plate building of mixed use comprising residential and retail components, at Grocon's Carlton Brewery Development.

A key factor in the decision to award them the contract was their stated ability to work within, and contribute to, the development of a larger precinct which has civic ambitions for the city. They have risen to their claims.

In their capacity as lead consultant they have thus far developed and subsequently presented a design which boldly addresses the Swanston Street edge and the substantial public realm component of the precinct.

Their design has dealt with the conflicting demands of Universal Design, five star Greenstar requirements and of course the careful attention to budget requirements.

We look forward to working with them on the next phase of the project and congratulate them on their long overdue renaming to Minifie van Schaik Architects.

Yours sincerely,



Ari Petrou
Manager – New Developments, Grocon Group

Referee Reports



29 May 2012

Jan van Schaik
Director
Minifie van Schaik Architects
Top Floor, 181 Swanston Street
MELBOURNE VIC 3000

Dear Jan

I would like to extend my appreciation to you and to Minifie van Schaik for your significant role in supporting the 12th Adelaide Biennial of Australian Art - *Parallel Collisions*, curated by Natasha Bullock and Alexie Glass Kantor, at the Art Gallery of South Australia between 2 March and 29 April 2012.

The biennial exceeded our expectations with audience attendances reaching above an unprecedented 104,000 people. The exhibition introduced contemporary art to new audiences, due primarily to the intelligently curated interventions in the Elder Wing of Australian Art. Furthermore the transformation of the temporary exhibitions galleries, made possible with your guidance and vision, also enriched the audience's experience of the art of our time.

The editorial, art critical and scholarly responses to the biennial were numerous, and all acknowledged the intellectual and curatorial nous underpinning the exhibition. In addition, the productive relationships that developed between the artists, curators, our curatorial and registration teams here at the Gallery and yourself, are further evidence of your professionalism and commitment. We are most grateful for your rigorous attention to detail and for your sustained passion for *Parallel Collisions*. We enjoyed working with you enormously and wish you the very best with your future endeavours.

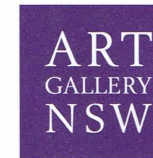
With best wishes

NICK MITZEVICH
Director

ART GALLERY OF SOUTH AUSTRALIA NORTH TERRACE ADELAIDE SOUTH AUSTRALIA 5000
TELEPHONE 61 8 8207 7000 FACSIMILE 61 8 8207 7070 www.artgallery.sa.gov.au



Referee Reports



DIRECTOR MICHAEL BRAND

6 February 2013

Jan van Schaik
Director
Minifie van Schaik Architects
Top floor, 181 Swanston Street
Melbourne VIC 3000

Dear Jan

We used to talk about love: Balnaves contemporary photomedia is currently on display at the Art Gallery of New South Wales and I am writing to express my sincere thanks for the support you have given to us throughout the preparation and realisation of this project.

The exhibition has been applauded widely by the arts community, the media and by the general public. Your support has made a substantial contribution to the success of the project and the publication.

I would like to take this opportunity to express our sincere gratitude and enclose two complimentary copies of the exhibition catalogue.

Best wishes

Michael Brand
Director

ART GALLERY OF NEW SOUTH WALES
Art Gallery Road The Domain Sydney NSW 2000 Australia
TEL +61 2 9225 1725 FAX +61 2 9225 1701 artmail@ag.nsw.gov.au www.artgallery.nsw.gov.au

Insurance & Company Details

Public Liability Insurance

Policy provider	IBNA Gold Insurance
Policy number	SMXo17798o15
Public liability limit any one claim	\$ 20,000,000
Products liability in the aggregate	\$ 20,000,000
Goods in custody and control	\$ 100,000
Excess	\$ 250
Expiry	15.10.2022

Professional Indemnity Insurance

Policy provider	AAI Limited t/a Vero Insurance
Policy number	PIA - 20082
Liability limit any one claim	\$ 5,000,000
Liability limit in the aggregate	\$ 30,000,000
Optional Extensions	Reinstatement covered
Retroactive date	Unlimited
Expiry	13.03.2022

Company Information

Minifie van Schaik Pty Ltd
ACN 095 904 466
ABN 55 095 904 466

Architects Registered in Victoria

MvS Architects C50 646

Contact Details



MvS Architects
Top Floor, 181 Swanston Street
Melbourne, Victoria, 3000, Australia
office@mvsarchitects.com.au
mvsarchitects.com.au
T+ 61 (0) 411 724 427

