



## Company Profile - Public

01/11/2022

**MWS**  
ARCHITECTS

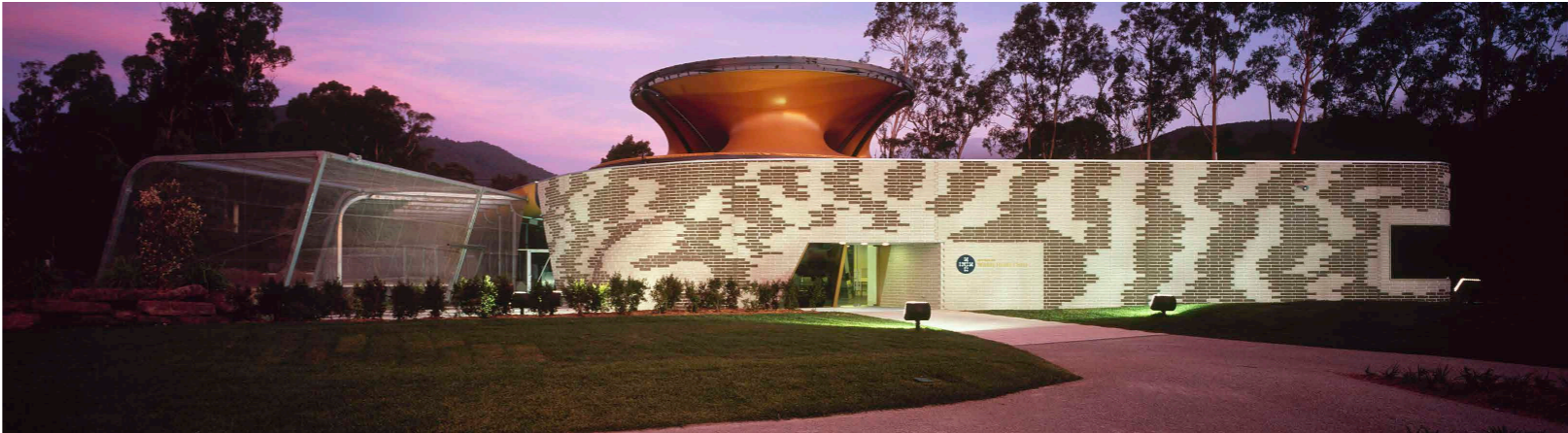
# Contents

---

Introduction	7
People	8
Company Structure	11
Innovation	12
Our Systems	13
Sustainable Practice	14
Digital Fabrication	15
Projects Types	16
Projects	18
Project List	52
Exhibitions & Publications	54
Recognition	55
Referees	56
Referee Reports	57
Insurance	62
Contact Details	63

# Introduction

---



The Australian Wildlife Health Centre, Healesville

MvS Architects is a globally recognised, award-winning and widely published architectural practice based in Melbourne in its eighteenth year of practice.

We undertake a variety of project types, and have expertise in delivering public buildings up to \$5m; have completed design and documentation on projects valued up to \$40m; and master-plans for projects over \$100m. Recent projects have focused on social and economic development through cultural heritage strategy, creating buildings with extensive interpretive content with environmental and ecological themes, and adaptive reuse. Our buildings have been constructed in dense cities, sensitive environmental locations, have significant landscape components and have incorporated the highest level of sustainable design practice.

MvS Architects approach each project as a unique set of problems and opportunities requiring a tailored innovative approach. We work closely with our clients and consultants to find exemplary solutions that are not always obvious. The MvS Architects’ design methodology emphasises both extensive research and engagement with all project stakeholders. Our designs consistently surprise and delight our clients and their constituents.

MvS Architects has received awards from the Australian Institute of Architects for the Victorian College of the Arts Centre for Ideas, Southbank

in 2004, the Australian Wildlife Health Centre, Healesville Sanctuary in 2006, Wattle Avenue House, Mildura in 2012 and for Edithvale Seaford Wetlands Discovery Centre, Edithvale in 2012.

MvS Architects has twice been the recipient of the Premiers Design Award in 2008 for the Australian Wildlife Health Centre and the second in 2012 for the Edithvale Seaford Wetlands Discovery Centre.

In 2015 the St Arnaud Street Museum, which we developed with Maudie Palmer AO, received a commendation for Community Engagement in the National Local Government awards and in the same year our project for the Alice Smith School, in conjunction with iPartnership.LCW, was awarded the PAM Category 13 Gold award for collaboration>

In 2018 RMIT New Academic Street (designed in conjunction with Lyons, NMBW, HAW, Peter Maddison and TCL) was awarded in the AIA Victoria architecture awards for: the Melbourne Prize; the Victorian Architecture Medal; the Henry Bastow Award for Educational Architecture; the Joseph Reed Award for Urban Design; the Award for Interior Architecture; and the Award for Sustainable Architecture, and the Daryl Jackson National Award for Educational Architecture; and the National Award for Urban Design

# People



Paul Minifie

Director, MvS Architects  
Associate Professor, RMIT School of Architecture and Design  
PhD (Architecture & Design) RMIT 2011  
MArch(Urban Design) RMIT 2002  
BArch(Hons 1st class) RMIT 1993  
Registered Architect, Victoria

Working exlsusively on MvS public projects, Paul has eighteen years' experience as a design architect on some of Australia's most significant public buildings and developments, which have attracted institute and other professional awards.

He has produced significant work including The Centre for Ideas at the VCA, the Australian Wildlife Centre at Healesville Sanctuary, and the Edithvale Seaford Wetlands Discover Centre – all award winning projects that have forged the practice's innovative reputation. Paul has a masters degree in urban design and a PhD in Design Research, the application of which manifests in the strong urban and research qualities of MvS Architects' work.

His innovative approach to architectural thinking and his acute powers of communication make him a natural leader in practice and his intellectual generosity empowers clients, peers and colleagues. Through writing he contributes to architectural books and journals and participates annually in the AIA awards process as a judge across a range of categories.

Paul was a founding academic at RMIT's Spatial Information Architecture Laboratory and subsequently RMIT's School of Architecture & Urban Design's D\_\_Lab. He is currently a project based, and post-professional, PhD supervisor in the RMIT School of Architecture and Urban Design, and chair of RMIT's annual European Practice Research Seminar.

## RECENT EXPERIENCE

- RMIT New Academic Street
- Alice Smith School (JB) KL
- Alice Smith School (EP) KL
- Wattle Avenue House, Mildura
- Melbourne Water Wetlands Discovery Centre, Edithvale-Seaford
- Harbour Esplanade, Melbourne Docklands
- Palm Deira Corniche, Dubai
- Carlton Brewery Redevelopment, Carlton
- Australian Wildlife Centre, Healesville Sanctuary
- Maribyrnong Deakin University Plateau Courtyard, Burwood
- Saatchi and Saatchi Gallery, Sydney
- Victorian College of the Arts Centre for Ideas, Library & Union, Melbourne
- RMIT University Media Centre, Union Facilities & Student Hub, Melbourne
- China Coal Economic College, Yantai China (competition, finalist)
- Yarra's Edge Windscreens, Melbourne Docklands (competition, finalist)
- Docklands Design Frameworks, Victoria Harbour and North West Precinct
- Marina Line Underground Railway, Singapore (competition, finalist)
- RMIT Swanston St Façade, Melbourne (competition, winner)
- Circular Quay Train/Ferry Terminal Redevelopment, Sydney (competition, commendation)



Jan van Schaik

Director, MvS Architects  
Senior Lecturer, RMIT School of Architecture & Design.  
PhD (Architecture & Design) RMIT 2015  
BArch (Hons 1st class) RMIT 2004  
Registered Architect, Victoria

Jan's has two decades of experience designing award winning prototypical public and residential buildings, leading innovative research projects, and supporting contemporary arts organisations through patronage and governance.

Arising from an interest in the complex relationship between human beings and their environments, Jan's work focuses on the cultural and societal underpinnings of architecture.

His designs of public buildings; mixed-use hubs; strategic plans; feasibility studies; master-plans; secondary and tertiary education projects; adaptive reuse projects; exhibitions in major art galleries; artworks; buildings in sensitive ecological environments; and prototypical residential projects have received awards, and been published in Australia and internationally.

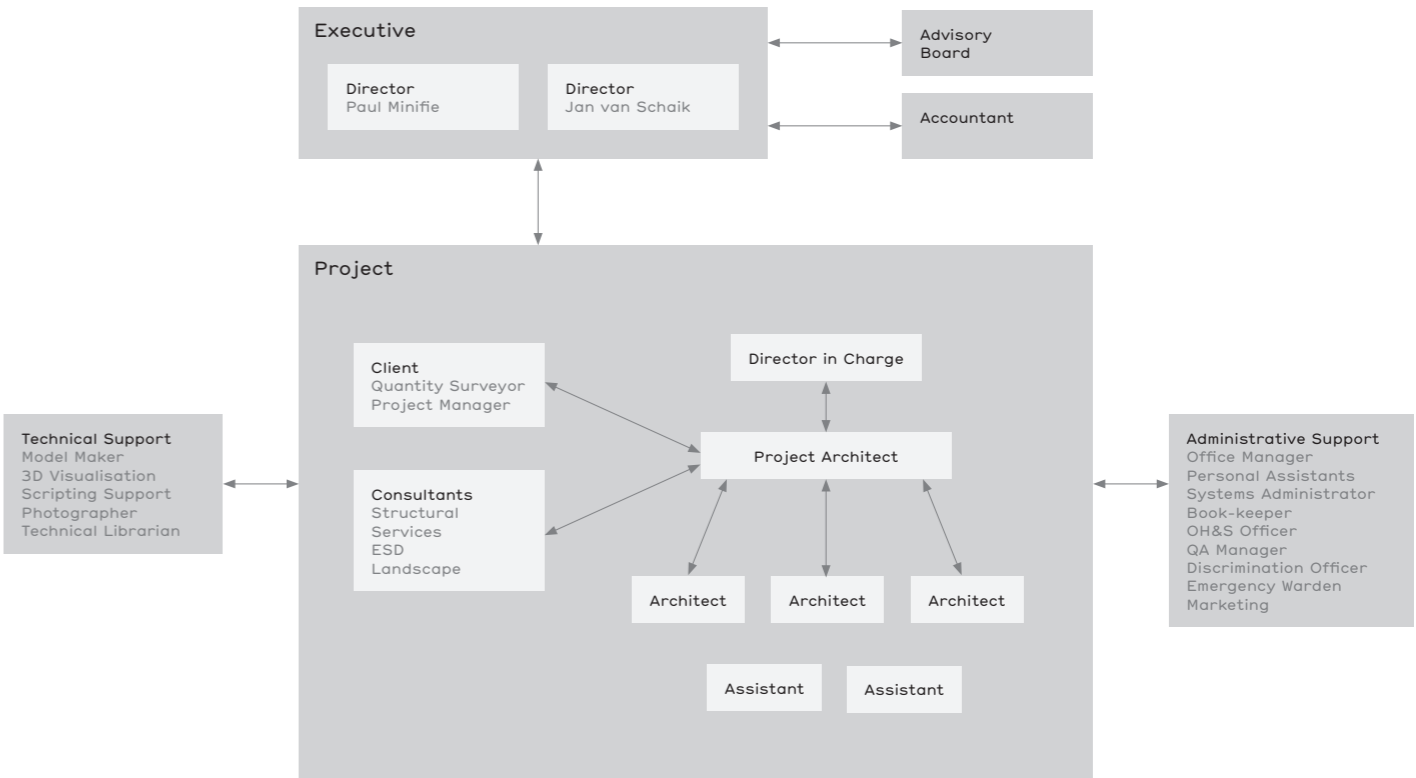
Jan is the designer of Lost Tablets, a series of works which explore the mysteries of human existence by exploiting a tension between a universally recognisable children's toy and the grammar of architectural symbols.

Jan is the producer of the *WRITING & CONCEPTS* public performance and publication series which reflects on the internal workings of creative practice. Established in 2016, the series has been hosted by multiple arts organisations, primarily in Melbourne and Victoria alongside national organisations in Canberra, New South Wales and South Australia.

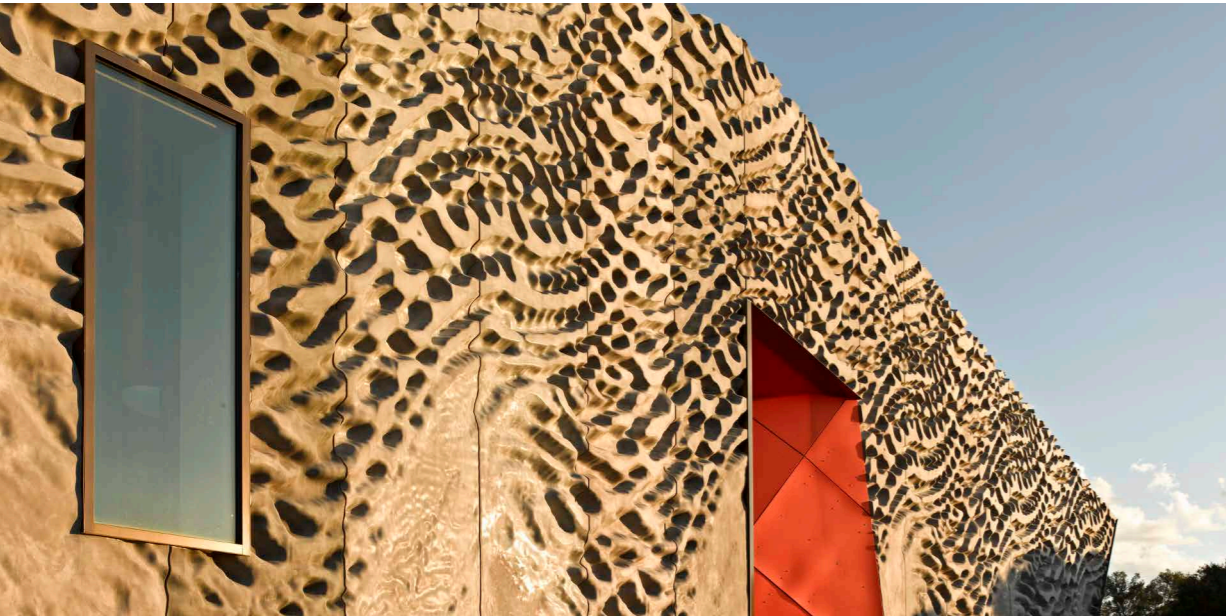
## RECENT EXPERIENCE

- Bell Street Residence
- Bligh Place Apartment
- Geelong Wool Museum Vision
- RMIT New Academic Street
- Wildlife Art Museum of Australia, Halls Gap
- Halls Gap Master-plan
- Hevea Tower, KL
- St Arnaud Civic Precinct Plan
- LGM Master-plan
- Alice Smith School (JB) KL
- Alice Smith School (EP) KL
- Wattle Avenue House, Mildura
- Emoh Ruo, Mildura / London
- Cafe Bourgeois, Docklands
- 59a Bourke Street, Melbourne
- Al Mudheef Development, Al Ain
- Sugar Station Kiosks, Melbourne
- Palm Deira Corniche, Dubai
- Carlton Brewery Redevelopment, Carlton
- Melbourne Water Wetlands Discovery Centre, Edithvale-Seaford
- Harbour Esplanade, Melbourne Docklands
- Victorian College of the Arts Centre for Ideas, Library & Union, Melbourne
- China Coal Economic College, Yantai China (competition, finalist)
- Yarra's Edge Windscreens, Melbourne Docklands (competition, finalist)
- Docklands Design Frameworks, Victoria Harbour and North West Precinct
- Marina Line Underground Railway, Singapore (competition, finalist)
- RMIT Swanston St Façade, Melbourne (competition, winner)
- Circular Quay Train/Ferry Terminal Redevelopment, Sydney (competition, commendation)
- OverLogo, (with Lou Weis)

# Company Structure



# Innovation



West facade of Edithvale Seaford Wetlands Discovery Centre

Research is a core activity at MvS Archtiects. We approach each project as an individual set of conditions. Although we bring expertise to bear on each commission we also believe that every project is unique and will benefit from a careful investigation of the circumstances particular to each commission and client. This approach allows us to understand the specific needs of a client and the set of conditions framing a project. It enables us to deliver an individual solution and to imagine each project as an opportunity to produce insight into a particular client body, its brief and circumstances.

The principals of MvS Architects have a long-standing relationship with a university research facility - RMIT University. Through teaching and research we pursue the process of design as a research activity.

This encompasses a broad spectrum, from specific architectural problems of form making, to the possibilities offered by new computer generated programs, to the changing needs and shape of contemporary social and cultural conditions. Our strong research base enables us to offer optimal solutions to each given problem.

# Our Systems



Healesville Sanctuary Entrance pavilion

MvS Architects' quality assurance systems deliver a consistent set of outcomes over a range of projects to meet client needs and expectations with the highest level of professional service.

Planning and policy strategy set by the senior management team define outcomes which processes are then designed to deliver. These processes are then disseminated to staff through training and the office manual. This manual provides specifically designed work methods and access to AIA practice notes to ensure consistency with industry standards.

Schedules, time lines and check-lists are regularly maintained to ensure value management across all areas of quality, time and cost. Production costs are monitored with a tailored on-line time sheet and job-tracking system.

Post-project reviews collate working records and capture knowledge from team members, sub-consultants and clients.

The skills bank of the office is regularly reviewed with training and professional development made available when required. Regular work flow and staff reviews are carried out to ensure the effectiveness of this training.

Standardised hard and soft copy file structures, document naming, revision management, transmittal system and chronological records of correspondence received and issued from the office ensure straightforward tracking of information.

Our password protected extra-net reveals job specific sections of office procedures, contact lists, minutes, tasks and transmittals to specific consultants on a job by job basis, and allows for unification of working systems across all consultants.

Weekly off-site backups safeguard against the unlikely event of accident or technical failure.

The office manual is reviewed on a six monthly basis and edited to incorporate knowledge captured through project-reviews. MvS Architects' quality assurance systems are themselves reviewed on an annual basis.

Our working environments, and the environments we design, are managed and monitored through our occupational health and safety, equal opportunity, sexual harassment, worksafe and work/life balance policies.

# Sustainable Practice

---



Looking up through the courtyard at the Australian Wildlife Health Centre

MvS Architects is a sustainable practice embracing environmentally sustainable design and development recognising its immediate local impact, and its global one. We have the skills and knowledge to capitalise on natural passive design as well as standard and new technological innovations to address recycling, energy usage, water consumption, material selection, energy embodiment, natural ventilation and the effective and healthy use of working and learning environments.

MvS Architects can advise its clients on how to achieve green star ratings on projects by carefully assessing the up-front costs versus the long term benefits of sustainable design.

For example, the roof of the Australian Wildlife Centre at Healesville Sanctuary is designed to work as a ‘solar chimney’, removing hot air from inside to provide passive ventilation to the gallery space, and so removing the need to air-condition.

The Melbourne Water Edithvale-Seafood Wetlands Discovery Centre is autonomous from all service grids. To achieve this we have included photo voltaic cells with storage batteries, internal water tanks as integrated thermal mass, composting toilets, wind catchers, natural ventilation, hydronic heat exchange heating and cooling and no air-conditioning.

Our 11 storey multi-residential and retail project within Grocon’s Carlton Brewery Development was designed to achieve a 5 star green star rating applying the principles of cross ventilation, the use of a tri generation plant, access to planted outdoor space, energy efficient appliances all of which are designed to operate as a cohesive system.

MvS Architects is Greenstar accredited.

# Digital Fabrication

---



Mould for Edithvale Seafood Wetlands Discovery Centre facade

Digital technologies and fabrication processes are a core aspect of the design and delivery philosophy at MvS Architects. Three-dimensional modelling and visualization, generative form finding, engineering analysis, project management and file-to-factory production are among the ways MvS Architects utilises state-of-the-art technologies in our practice.

Examples of how MvS Architects has employed these technologies can be found in the design and co-ordination of two key elements in the Australian Wildlife Centre at Healesville Sanctuary. The ‘solar chimney’ was realised formally through complex digital modelling of a mathematical surface. The zebra-like brick facade of the Wildlife Centre was generated by developing an algorithm that emulates patterns found in nature. Digital tools were also employed in the construction of the chimney, with fabrication drawings produced directly from optimised design models developed in collaboration with the contractor.

Digital modelling and fabrication technologies were also employed in the facade of the VCA Centre for Ideas. The intersecting conical surfaces, designed to be flattened out, are constructed out of the same two dimensional prefabricated panel sheet, before being moulded to the same curvature. The panels are then cut using computer controlled laser cutting, allowing for a complex facade to be fabricated with remarkable efficiency.

Similarly, we employed these technologies in the delivery of our latest public building, the Edithvale-Seafood Wetlands Discovery Centre. Digital models for structural and thermal analysis were produced for collaboration with engineers. 3-D digital steel shop models were cross checked with design models, and digital tools were used to design, prototype and fabricate panels for the facade.

# Project Types

---

## Public Buildings

We have been in the business of designing public buildings since 2000, approaching each project as unique set of problems and opportunities requiring a tailored and innovative approach. Amongst our public clients we count The Victorian College of the Arts at Melbourne University, Melbourne Water and Zoos Victoria. We have also conducted studies

for Places Victoria, the Department of Treasury and Finance, Mildura Rural City Council, RMIT University and Deakin University. We work closely with our clients and consultants to find exemplary solutions that are not always obvious. Our designs consistently surprise and delight our clients and their constituents.

## Regional Cultural Development

We have an expansive interest in the development of regional Victoria. Our feasibility study for the a new Shepparton Art Museum has now been adopted by its Shire. The St Arnaud Street Museum, developed in conjunction with Maudie Palmer AO, was awarded a commendation for engagement in the 2015 National Awards for Local Government. We have produced a schematic design, and advocated for, the Wildlife Art Museum of Australia in Halls

Gap where we have also delivered a Tourism and Public Land Use Development Masterplan. We are currently producing a Cultural Facilities Vision for the Mount Alexander Shire in Castlemaine and have been extensively involved in the development of the Australia Felix Museum of Arts, Culture and History with a local community group and the Shire in Hamilton.

## Urban Design

Our work is underpinned by urban design. Our projects, large or small, are designed to improve their physical, environmental, demographic, cultural and economic context. In many instances this is achieved through the vehicle of a specific urban design or

master-planning commission and we count as clients in this area Zoos Victoria, Melbourne Water, Places Victoria, The City of Geelong, Nakheel, TDIC, The Dehan Group, the Shengjing Group and the Department of Treasury and Finance.

## Education

In the educational sector we count among our clients the University of Melbourne, Deakin University, RMIT University and the Alice Smith School. Also our projects for Melbourne Water and Zoos Victoria perform non-curriculum based educational functions. For a number of different project types we have addressed briefs containing complex mixes

of public function, research facilities, teaching spaces and administrative offices; all required to address the needs and ambitions of the university executive, facilities managers, colleges, departments and students so as to create cohesive learning and research environments.

## Multi-Residential

Since 2007 we have undertaken a series of projects of a residential nature. Our house for Stefano de Pieri and family picked up an architecture award and was featured on the ‘Sacred Spaces’ TV Series. We redesigned an apartment in, and the foyer of,

the Hero Apartments. Included here is also a multiple-housing project that encapsulates some of what we learned during schematic design of the Swanston Square project for Grocon in 2008.

## Commercial

Our commercial clients include an airport development company, retail and commercial developers, government departments, retail chains, construction companies and an advertising company. We create unique solutions to their needs, paying particular attention to their own clients - in doing

so we can tailor their products to their markets, environments, and for well-being and productivity. With our commercial clients we create built assets that express their histories and strategic aspirations.

## Retail

Our retail experience ranges from a single cafe in Melbourne’s Docklands to the planning of a mega-mall on reclaimed land in a marina development in Qinduandao, China. Many of our educational projects have retail components, as did the mixed-use project that we prepared schematic design for, in Grocon’s.

Swanston Square development. Our work for the Sugar Station chain required the development of a robust design language to provide brand consistency between an eclectic set of locations while meeting the constraints of high traffic shopping.

## Art Spaces

We have been working with artists and arts administrators at design and governance levels for over 12 years. Recently we have designed a series of exhibitions in collaboration with curators. Art is necessarily privileged in a gallery, and to support this, architecture must to some extent recede.

However, through our work with curators we have been developing ways of enhancing the themes and ambitions of curators and galleries in a more spatially explicit way without disturbing the importance place that art occupies in our cultural institutions.

## Art Works

We have been working with artists for over a decade. Paul Minifie is a member of the public art acquisition committee of RMIT University, Jan van Schaik was deputy chair of Gertrude Contemporary Art Spaces for six years and is now the chair of Creative Spaces which curates and develops affordable space for the

creative industries in the City of Melbourne. Jan is also an advisor to Regional Arts Victoria’s Small Town’s Transformation project and a board member of Palimpsest Mildura Art Biennale. Included here are a few of the projects we’ve done with artists.

## Residences

Since 2007 we have undertaken a series of projects of a residential nature. Our house for Stefano de Pieri and family picked up an architecture award and was featured on the ‘Sacred Spaces’ TV Series. We redesigned an apartment in, and the foyer of,

the iconic Hero Apartments in Melbourne’s CBD. Included here is also a multiple-housing project which encapsulates some of what we learned during schematic design of the Swanston Square project for Grocon on 2008.

# Centre for Ideas

## Educational

SOUTHBANK MELBOURNE, 2000  
CLIENT: MELBOURNE UNIVERSITY

PHOTOGRAPHY:  
PETER BENNETTS & DEREK SWALWELL



The Centre for Ideas encompasses a complex program for a difficult site at the heart of the VCA campus, fulfilling the requirement for a landmark building representative of the college.

Derived from generative processes, the project stimulated debate around design, materialisation, and the perception of abstract forms.

The project accommodates teaching and office spaces as well as a library. It also transcends its function with the skin of conical

stainless steel panels forming the facade. It is linked into the existing VCA building via a public realm that focusses campus circulation and activity.

The inherent dynamism of the project is conveyed through the choice of facade material and gradients of colour on the public

stair and external canopy, which create a sense of movement and flux between the abstract forms and the 'reality' of building techniques.

The project was awarded the 2004 Australian Institute of Architects prize for Best New Institutional Building.

# Australian Wildlife Health Centre

## Public Building

HEALESVILLE VICTORIA, 2007  
CLIENT: ZOOS VICTORIA

PHOTOGRAPHY:  
PETER BENNETTS



This project is quite unique in both its function and form, as a fully operational veterinary facility that also welcomes visitors to a remarkable and compelling experience.

Organised around a public gallery, where visitors interact with the activities of the veterinary hospital.

Visitors can witness laboratory work and animals undergoing diagnosis, surgery and recovery.

A rich multimedia experience

enables visitors to gain insight into how animals become injured and the full range of activities involved in their care.

Designed to the highest standards of ESD principles, the central ventricle acts as a passive ventilation duct, entirely removing the need for mechanical

cooling of the public gallery. Constructed from a shimmering membrane, the structure is visible from the surrounding landscape.

The project was awarded the 2006 William Wardell Institutional Architecture Award and the 2008 Premiers Design Award.

# Healesville Entry Pavilion

## Public Building

HEALESVILLE SANCTUARY

CLIENT: ZOOS VICTORIA

PHOTOGRAPHY:

SHANNON MCGRATH



This pavilion was set back from the original entry buildings to create a large entry forecourt for meeting, milling, dining and perusing the retail on offer before entering the Sanctuary.

Where visitors entering the Healesville Sanctuary once faced a congested turnstile, we have instead designed an entire entry sequence and threshold.

Arriving at the car park, visitors are greeted by a large artwork announcing their arrival to the

Sanctuary. They then pass under the undulating threshold into an un-ticketed courtyard within which they have access to toilets, information about the sanctuary, access to the cafe and retail, and a ticketing booth with a shaded queuing area.

Once through the checkpoint beyond the ticketing booth, a path takes visitors into the heart of the sanctuary where they will find, among other things, the Australian Wildlife Health Centre - also designed by MvS Architects.

# Edithvale-Seafood Wetlands Discovery Centre

## Public Building

EDITHVALE-SEAFORD MELBOURNE, 2006 - 2011

CLIENT: MELBOURNE WATER

PHOTOGRAPHY:

PETER BENNETTS



This educational discovery centre, located adjacent to a Ramsar-listed wetlands, is a flagship ESD project for Melbourne Water - and doubles as a bird hide.

Perched over the once extensive and ecologically rich Carrum Carrum swamp, this building provides an interpretive experience through which to understand the vital and complex history and workings of this now urban wetland and its role in the water-cycle.

Solar panels, heat-pumps, floor-grate supply and passive extraction, double glazing, motion controlled lighting, high levels of insulation and thermal mass all allow building operations to approach carbon neutrality. This, combined with a composting sewerage system and internal water storage, attracts an

equivalent of 6 Green Stars.

The Edithvale Seafood Wetlands Discovery Centre was awarded an Australian Institute of Architects award for Public Architecture in June 2012, a Master Builders Association Award in August 2012 and the Premier's Design Award in September 2012.

# The Wetlands Discovery Centre Masterplan

## Urban Design

EDITHVALE / SEAFORD, 2004  
CLIENT: MELBOURNE WATER



This master-plan for a discovery centre proposed a series of methods through which the public could gain direct experience of the RAMSAR-listed Edithvale Seaford wetlands.

The Edithvale Seaford Wetlands are the remaining portion of the Carrum Downs wetlands.

The wetlands are managed by Melbourne Water, who commissioned this master-plan as a framework to improve public access to and understanding of the wetlands and its flora and fauna.

The project was instigated by volunteers who have been maintaining a bird hide on the site for many years.

While the wetlands is protected by a RAMSAR listing, its proximity to built-up areas puts it at risk of negligence and vandalism.

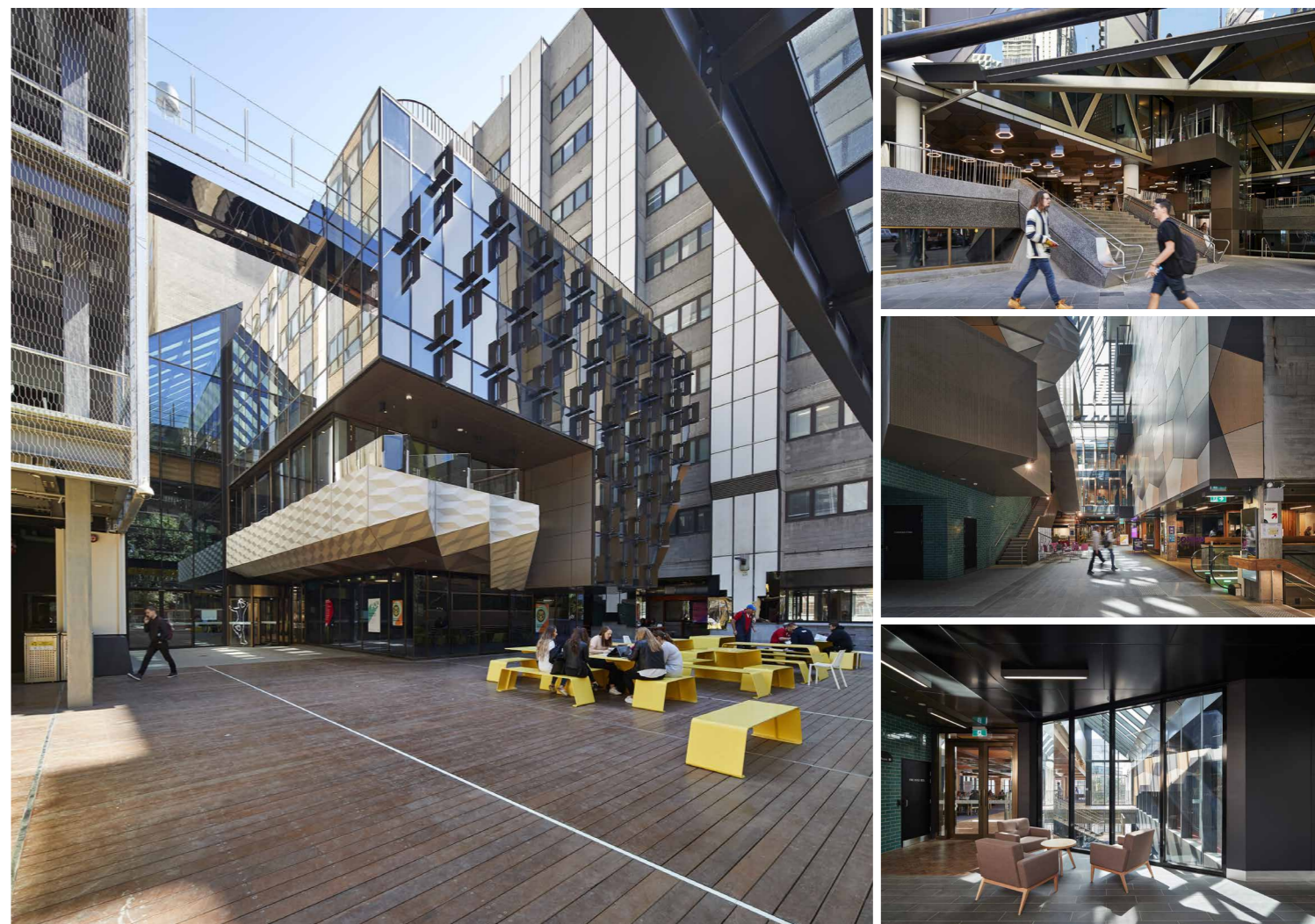
Central to the master-plan, then is an ambition to better educate the immediate and broader community about the significance and sensitivity of the wetlands. This was ultimately manifest in an interpretative education centre, designed by us and completed in 2011.

# RMIT New Academic Street

## Educational

MELBOURNE  
CLIENT: RMIT UNIVERSITY

PHOTOGRAPHY:  
PETER BENNETTS



An entirely new library, student services and public concourse form the heart of this extensive remake of RMIT's major Swanston Street buildings.

Additional teaching and library spaces, flexible learning spaces, facade upgrades, fluent circulation spaces and a reinvented public realm are key features of this major adaptive re-use project. The renovation makes permeable the existing building creating public links between Swanston Street and Bowen Street

over multiple levels to further enmesh the University with the city.

Awarded in the 2018 AIA Victoria architecture awards for: the Melbourne Prize; the Victorian Architecture Medal; the Henry Bastow Award for Educational Architecture; the Joseph Reed

Award for Urban Design; the Award for Interior Architecture; and the Award for Sustainable Architecture.

Designed in conjunction with Lyons, NMBW, HAW and Peter Maddison.

# LGM Masterplan

## Urban Design

KUALA LUMPUR, 2013

CLIENT: LGM, MALAYSIAN RUBBER BOARD

WITH: IPARTNERSHIP



A design proposal for an educational and research facility spanning across 535 acres of RRI land in Sungai Buloh and owned by LGM (the Malaysian Rubber Board).

LGM investments in research, technology and manufacturing, drive an immeasurable movement in enhancing every day and global solutions.

MvS in collaboration with i-Partnership were commissioned to master-plan the development

of this facility with the objectives to provide infrastructure, consolidate research & education, services and knowledge sharing. The aspirations include an Institutional Research Centre known as the Centre of Excellence, The Selangor Rubber College, The Hevea Complex,

Discovery Centre, Convention Centre and Boutique Hotel, all located on the LGM's own land on Persiaran Cakerawala, Subang Bestari.

# Castlemaine Cultural Facilities Vision

## Urban Design

CASTLEMAINE, 2015

CLIENT: MOUNT ALEXANDER SHIRE COUNCIL

WITH: BIG SPACE



A vision for the strategic planning of Castlemaine's Cultural Facilities designed to convert a reputation for festivals and arts into social and economic benefit for the region at large.

A shared Cultural Facilities Vision is being developed with the Mount Alexander Shire, key stakeholder groups and the general public. The project involves observation of, and conversations about, the current, planning, programming, managing and maintenance of a broad range Castlemaine's cultural facilities to gain an understanding of audience

patterns, facility sharing, staffing levels in order to unlock latent potential and to build stronger cultural identity in the urban spaces and built environment of the town and its region.

The project will culminate with a series of recommendations, and design options, for the long term development of Castlemaine

and the development and enhancement of all its economies through more tangible cultural identity and more frequent participation from locals and visitors alike.

The project is due for completion in December 2015.

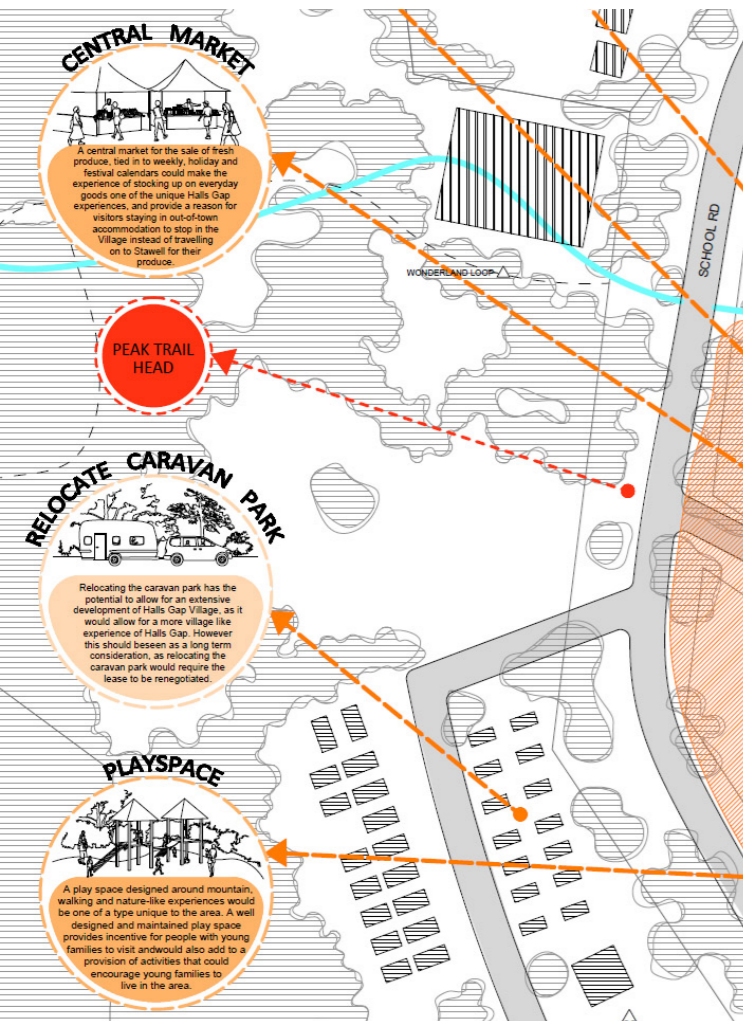
# Halls Gap Masterplan

## Urban Design

HALLS GAP, 2014

CLIENT: THE NORTHERN GRAMPIANS SHIRE

WITH: SGS ECONOMICS & PLANNING AND MAUDIE PALMER AO



A master-plan for future commercial investment and public land development in a small and vibrant community nestled in the valley of the majestic Grampians mountain range.

This master-plan seeks to re-orient the thinking, planning and ideology of the town towards the majesty of the mountain range from which it has grown. The process involved a comprehensive audit of previous urban design frameworks, planning overlays and marketing plans, as well as

a series of interviews with key stakeholder groups. It culminated in design workshops in which the community was guided to design its own future.

Recommendations arising from the report include the re-branding of the town around 'walking', an

all-weather activity space and shire assistance in making the planning process more accessible.

The master-plan was presented to the broader community in February for feedback and will be presented to council for adoption and implementation in April 2016.

# St Arnaud Civic Precinct Plan

## Urban Design

ST ARNAUD, 2014

CLIENT: THE NORTHERN GRAMPIANS SHIRE

WITH: SGS ECONOMICS & PLANNING AND MAUDIE PALMER AO



A Civic Precinct Plan expressing a new vision for a picturesque town in regional Victoria which re-frames the futures of the district around its strong cultural heritage and creative energies.

This civic precinct plan re-engaged a community in its own cultural heritage and creative energies. Doing this involved looking beyond the one-block constraints of the Civic Precinct, towards the Edna Walling Garden to the west, the botanic gardens to the east, and a civic spine running

the length of the entire town.

An extensive community engagement process was undertaken to workshop a series of proposals and recommendations which ultimately resulted in a grant from Regional Development

Victoria to upgrade St Arnaud Town hall. Simultaneously we pioneered, with Maudie Palmer AO, a street museum and artist in residency program, funded by the shire and Regional Arts Victoria, which opened in January 2015

# The Keys to Mildura

## Urban Design

MILDURA / LONDON, 2010

CLIENT: AUSTRALIAN HIGH COMMISSION LONDON



Conceived of in opposition to a grand master-plan, we propose to create a series of contained and highly evocative projects that offer new anchoring experiences through which Mildura can grow.

Mildura's population is growing, its tertiary sector is becoming more important and tourism in the region is increasing.

This project proposes the establishment of a coherent and contemporary urban realm. Rich spatial qualities and experiences are seen as increasingly vital assets for a city to attract and

support a diverse populace.

By proposing the amplification of a series of vivid experiences such as the wharf, the weir and lock, the Mildura Brewery, Stefano's Restaurant, the Arts Centre and Rio Vista house, we celebrate islets of intensity which derive their memorability by marshalling their distinct

scenographic, historical, cultural and formal qualities in distinct ways.

The work was exhibited at the London Architecture Festival in conjunction with Architecture Media and the Australian High Commission.

# Geelong Botanic Gardens Visitor Precinct

## Urban Design

GEELONG, 2010

CLIENT: CITY OF GREATER GEELONG

WITH: RUSH WRIGHT ASSOCIATES



The Visitor Precinct creates a strongly defined place of arrival and conveys key information about the gardens within an atmosphere that underscores the value of these public spaces.

Eastern Park and the Geelong Botanic Gardens are crucial public components of the thriving city of Geelong. They hold a variety of recreational activities, and as a living museum give visitors access to a fascinating world of natural wonders.

The key components of their mission include biodiversity and conservation, the role of plants in everyday life and the idea of an organic institution with a significant history and future.

This new Visitor Precinct has the potential to distil and express

the above values by presenting them to the public in a vibrant and engaging way through interpretative and educational programs.

Undertaken in collaboration with Rush Wright Associates.

# World Architecture Workshop

## Urban Design

WITH RMIT UNIVERSITY, TOHOKU UNIVERSITY, ENSAM & THE UNIVERSITY OF MICHIGAN

2002 - 2012



The World Architecture Workshop (WAW) has been dispatched to various corners of the globe to conduct hypothetical design experiments in solving intractable urban problems.

We have been running WAW with masters students, academics and professionals from RMIT University, Tohoku University, Miyage University and l'École Nationale Supérieure d'Montpellier since 2002.

Students and academics from each

university propose hypothetical design experiments which are then presented to design professionals, communities, authorities and the press.

In some instances, these lead to planning changes and built outcomes in the areas in question.

Workshops have been conducted in Sendai, Sommières, Detroit, Phillip Island, Villeneuve, Réunion Island, Barcelona and Mildura.

# Melbourne Waterfront Urban Planning

## Urban Design

MELBOURNE CBD, 2003

CLIENT: VICURBAN



VicUrban commissioned MvS to prepare urban design 'frameworks', visualising potential futures for the Melbourne Waterfront.

VicUrban (now Places Victoria) engaged us to investigate likely development outcomes at various future stages of the North West Precinct, Victoria Harbour and the Yarra Waters precincts.

Based on written master-plans and utilising 3-D visualisation

tools and urban design skills, various works were used to market precincts to potential developers and then realised as physical models for public exhibition and comment.

Understanding the driving economic conditions and

accurately representing the set of the resultant urban forms were key to establishing a balance between desired heights, aesthetics, activated edges and the optimisation of net and gross floor areas. We then produced a series of images showing the urban fabric changing over time.

# Super Yacht City

## Urban Design

QINHUANDAO, 2011

CLIENT: SHENGJING GROUP

WITH: RMIT UNIVERSITY & TERRIOR



This project for the Shengjing Group is a mixed use and transport development supporting the manufacture and sale of super-yachts by the same developer.

The design process required integrated design and planning of long term and short term residential, commercial, retail, recreational uses, transport infrastructure, a 1,000 berth marina and a publicly accessible water front.

Designed in collaboration with Terroir and RMIT, the project is pitched at the local and international recreational market.

The cultural centre to the south and icon towers to the north bookend a linear park and winter garden built on piles in the mouth

of the Tanghe river. Two bridges, a tunnel, 1,000 berths and a publicly accessible water's edge are designed to encourage high winter and summer use.

This master-plan was adopted by Qinhuaodao local government in 2012.

# Alice Smith School - EP

## Educational

EQUINE PARK, KUALA LUMPUR 2012

CLIENT: ALICE SMITH SCHOOL

WITH: LEE CHOR WAH & IPARTNERSHIP



This dynamic architecture of the covered walkway and the new administration building provides a clear sense of address to the administrative heart of the campus.

Our design for a new three level building for the Alice Smith School campus at Equine Park, includes a covered entry, reception, admissions, transport office, administration office, storage and accounts at ground level.

The first level consists entirely of 'Key Stage Leader' offices and meeting rooms. The second level includes the office of the Principal, the Director of Schools and the three Assistant Principles.

The building's facade is a patterned precast concrete panel system which undulates giving

the building dynamic attitude at key moments. The windows, which will be shaded against the sun, are shapely such that they may be integrated into the facades pattern.

This project reached completion in October 2014.

# Alice Smith School - JB

## Educational

JALAN BALLAMY, KUALA LUMPUR 2012

CLIENT: ALICE SMITH SCHOOL

WITH: LEE CHOR WAH & IPARTNERSHIP

PHOTOGRAPHY:

H. LIN HO



The new two level building proposed for Jalan Bellamy provides a new gateway to the school, offering support for students and parents alike.

Our proposed design for the Alice Smith School campus in Jalan Bellamy comprises a ground level open air shaded cafeteria serviced by a kitchen which will provide catering for the balance of the campus in place of the existing deli, currently on the wrong side of the bus drop off.

Arching over a sunken play area to the east, an architectural stair advertises and provides entry to the parent's centre via a parent's deli for those wishing to socialise with other member of the school community. West of this stair an elevator provides access for the less able.

The parents' centre provides information about the school and informal meeting areas overlooking the assembly area and a balcony to the south.

This project reached completion in October 2014.

# RMIT University Union & Student Hub

## Educational

MELBOURNE CBD, 2002

CLIENT: RMIT UNIVERSITY

PHOTOGRAPHY:

FARZIN LOTFI-JAM



Housing a new media centre, union facilities and the student information hub, this project won an Australian Campus Manager's Association Award in 2002.

This master-plan for the redevelopment of the plaza levels of RMIT buildings 10-14, Level 4 was designed to provide for growth in student facilities and to improve linkages between the newly landscaped Bowen Street and Swanston St.

The staged implementation of the master-plan included management of the construction of a new Media Centre, Union facilities and the Student Information Hub.

In 2012 MvS, along with Lyons, HAW, NMBW and Peter

Maddison, were awarded a major commission to refurbish the the RMIT University buildings 10, 12 and 14 between Swanston Street and Bowen Street.

This project was superceded by the RMIT New Academics Street project in 2017.

# Datum Regalia

## Multi Residential

KUALA LUMPUR, 2012

CLIENT: LEND LEASE

WITH IPARTNERSHIP



A mixed use development in Shah Alam, Malaysia - layered with cultural motifs that define an architectural language, key to driving the project and development branding.

The development comprises of serviced luxury apartments, with 1000 Square metres allocated for office space.

The podium and ground levels will cater for commercial use while varying widths of paths,

roads, promenades and plazas topped with thick vegetation are alike to a forest set within an urban environment. It will cater for pavilions and open air areas for market stalls, bathing, children's play, roller-blading, cycling and general leisure.

The ground level network of lanes with island tenancies, allows for the program to be interspersed loosely across the site with vertical movement between podium and landscape, and unobstructed movement between private and public areas.

# Swanston Square Apartments

## Multi Residential

CARLTON MELBOURNE, 2009

CLIENT: GROCON



This 1,200m<sup>2</sup> floor plate building combines naturally ventilated corridors and a large central void with shared spaces and open stairwells to create a residential community above a retail complex.

Sited between Melbourne University and RMIT University, this residential development was designed to appeal to a high demand for tertiary student accommodation, and meeting Grocon's ambitious sustainable design, social well-being and innovative design criteria.

Each apartment was designed to provide maximum amenity in the most efficient way. The construction methodology allowed the abolition of certain on-site trades by fabricating the services to each apartment into the joinery off-site and by constructing walls and ceilings from pre-finished panelised materials.

The central void bulges the plan form of the building, providing the north-west and south-west apartments with views that the site would otherwise not allow.

The project was wholly designed before the client sold the site to an alternate developer in mid 2014.

# Swanston Square Commercial

## Commercial

CARLTON MELBOURNE, 2010

CLIENT: GROCON



A company flagship with flexible work spaces accessed via an active double height lobby/cafe, and all beneath a winter-garden capturing northern warmth under a planted roof garden.

This commercial office building was designed for a tenant on behalf of Grocon, the site's developer. The building is designed to maximise floor space within a 'T' shaped sectional planning envelope by testing the limit of floor level extensions beyond the eastern boundary line. To this end a

construction methodology was also adopted which allowed for large cantilevering of levels 3-10 towards the north and south.

The lobby is defined by a series of stacked and varied recycled timber battens that lead to a double height void which provides views to and from the public

rooms on the mezzanine. The northern end of the upper level incorporates an extensive internal winter-garden to capture the northern warmth for employees at and between work.

The project was wholly designed before the client sold the site to an alternate developer in mid 2014.

# Hevea Tower

## Commercial

KUALA LUMPUR, 2014

CLIENT: LGM, MALAYSIAN RUBBER BOARD

WITH: LEE CHOR WAH & IPARTNERSHIP



A 17 storey tower complex is to serve as the LGM Corporate Office. The proposed design comprises a day care nursery, police station, gym and a cafeteria.

MvS in collaboration with iPartnership were commissioned to translate LGM's vision and its enterprising character into a building with lively and hospitable working conditions that would stimulate identity, efficiency and collaboration.

A mix of formal and informal

organisation within LGM's office environment is seen as key to encouraging productive and social work spaces.

The building will perform as a one stop centre for employees and clients - a multifunctional hub that allows working parents to drop their kids at the nursery, get

breakfast and head to the office all within one route. The facade is formed by undulating panels that read akin to the bark profiles of the Hevea tree trunk.

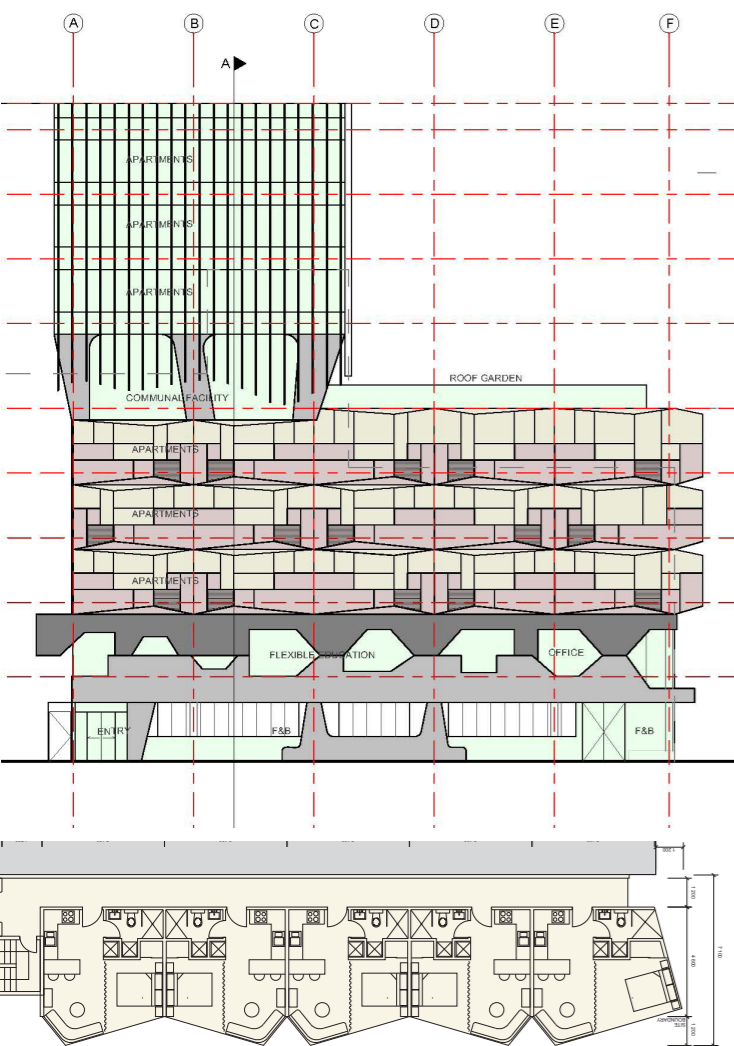
This project has reached the end of design development and construction will commence in 2016.

# 59 A Bourke Street

## Commercial

MELBOURNE

CLIENT: CITY OF MELBOURNE AND THE LADDER GROUP



This project addresses a shortage of housing for underprivileged youth in the Melbourne CBD and creates an enigmatic piece of architecture on a surprising site at the top end of Bourke St.

59a Bourke Street is located on a sliver of a site only 3m wide at the top end of Bourke street in Melbourne's CBD. A title search revealed that the site in fact extended an additional 3m into the adjacent lane.

Inspired by a recent trip to Tokyo, we considered this an ample site

and proposed a 21 apartment assisted-living complex for disadvantaged youth.

This model called for a commercial ground floor tenant and a 140m2 office above. The proposal aims to address social issues in the CBD and resolve an eyesore in the street.

This project was presented to the City of Melbourne and the Ladder Group who are considering a partnership with Melbourne Affordable Housing to develop the project.

# Shepparton Art Museum

## Art Spaces

SHEPPARTON, 2014

CLIENT: GREATER SHEPPARTON CITY COUNCIL + REGIONAL DEVELOPMENT VICTORIA

WITH: SIMON MCARTHUR ASSOCIATES AND MAUDIE PALMER AO



A feasibility study and business case for a new Shepparton Art Museum for, and about the unique community of the region and focussing on the production of contemporary Australian Art.

The Shepparton Art Museum received a bequest of a significant collection of indigenous art on the condition that the shire build a new stand-alone facility for the region. Simon McArthur, Maudie Palmer AO, and MvS Architects jointly won the commission to prepare a concept design, consult

extensively with a diverse range of key stakeholders, conduct benchmarking and background research, prepare an options report and ultimately produce a business case outlining development and operating costs.

We proposed a design favouring a

small building footprint to create a tall freestanding museum - a unique type in regional Victoria. The spaces are centred around a central circulation atrium that leads to an entire open level half way up, which affords shelter from the sun and views over Shepparton's scenic lake.

# The Wildlife Art Museum of Australia

## Art Spaces

HALLS GAP, 2014  
CLIENT: WAMA  
WITH: TRACT LANDSCAPE ARCHITECTS



A museum surrounded by a curated native bushland park.

The Wildlife art museum of Australia aims to create a world class gallery space and educational facilities whilst working with the existing conservation areas and wetlands/waterways on the outskirts of Halls Gap.

The projects has been designed

to both rejuvenate the wetlands and encourage public engagement with local flora and fauna.

The museum itself is comprised of a substantial gallery, with associated storage areas, fitted with international museum standard security and climate control, capable of housing a

world class collection of art relating to the subject of wildlife. The galleries are supported by a large central covered plaza, encouraging communal gatherings, community galleries, a cafe/restaurant, offices and a project space for resident artists.

# We used to talk about love

## Art Spaces

BALNAVES CONTEMPORARY, THE ART GALLERY OF NEW SOUTH WALES  
CLIENT: ART GALLERY OF NEW SOUTH WALES  
WITH: NATASHA BULLOCK, CURATOR

PHOTOGRAPHY:  
CHRISTOPHER SNEE



A re-design of the Franco and Amina Belgiorno-nettis and Family Contemporary Galleries creates a conceptual frame through which to perceive the works.

For the first time since they were opened in 1988 the galleries have been architecturally reconsidered. The collaboration has enabled the curatorial spread and the architecture to provide a journey prompting a new reading of these artworks. This new journey is manifest through

a series of interlinked rooms and corridors with new walls soaring high into the galleries' coffered ceilings, while compressed spaces are relieved by glimpses into other spaces. This intimate viewing experience takes visitors on a spatial and emotional journey from Polly Borland's

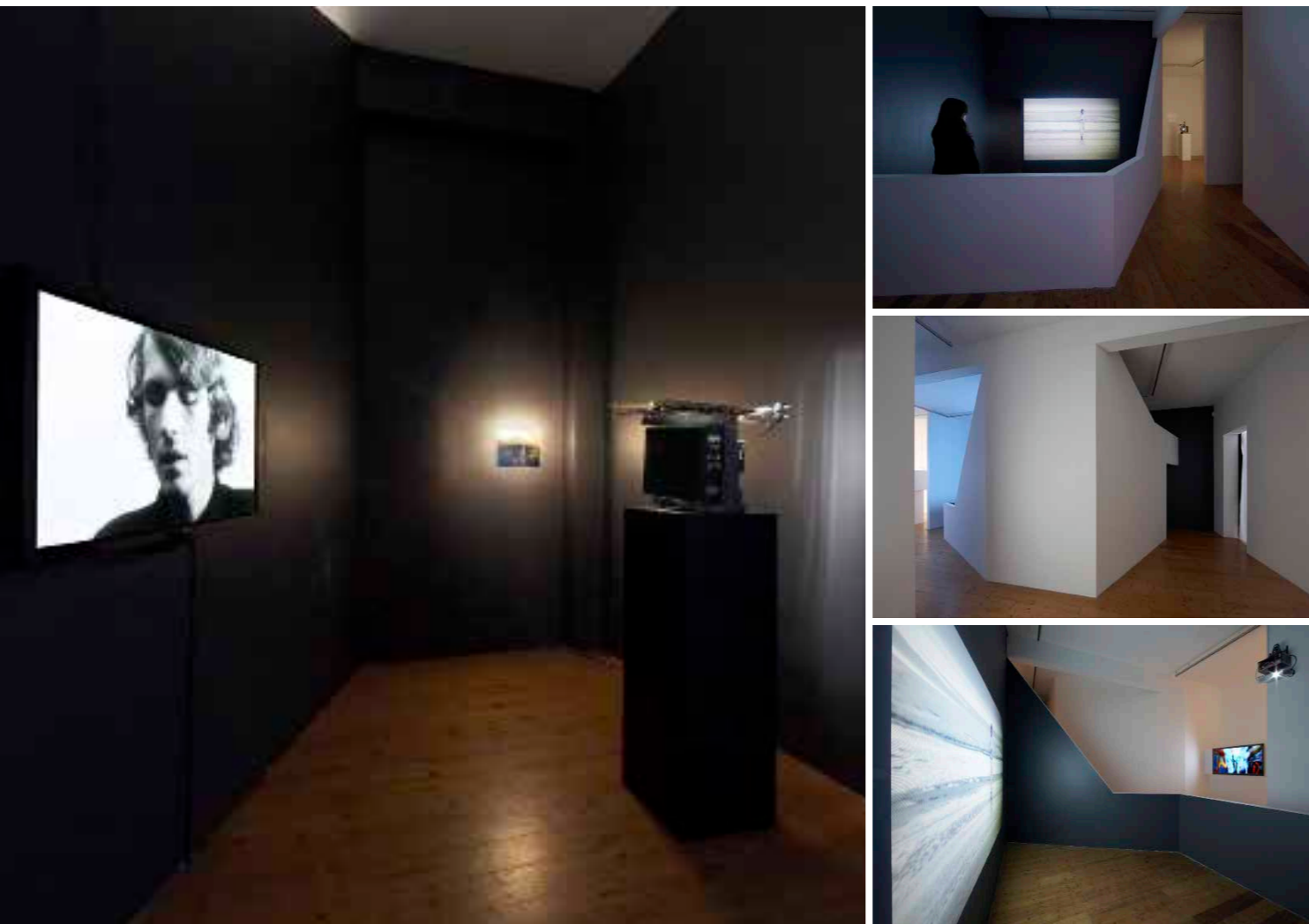
playfully dressed-up bodies, replete with sexual suggestion, to Tim Silver's disintegrating sculpture of a stargazing young man. This exhibition considers the variegated terrain of love's language – joy, elation, desire, eroticism, longing, loss, melancholia and memory.

# Dying in Spite of the Miraculous

## Art Spaces

200 GERTRUDE ST FITZROY, 2010

CLIENT: MELBOURNE INTERNATIONAL ARTS FESTIVAL



This exhibition combines “the intrigue of real life events and myths born from trauma with ritual and magic, presenting a restless fusion of the celestial and the real.” - The curators

With the curators we designed the ground floor gallery spaces to create a labyrinth intertwining spaces and works.

Angled walls create preambulation and enclose the von Brandenburg, Olde Wolbers and Jan Ader works in spaces of their own, with the rest

commingling in the generous circulation space.

A discrete door in the Jan Ader room leads to the viewing space of the O’Callaghan work where the viewer becomes the viewed, separated from others by a dwarf wall.

The Blake and Koester works are

positioned to create focus on the work while catching peripheral glimpses of the next en-route.

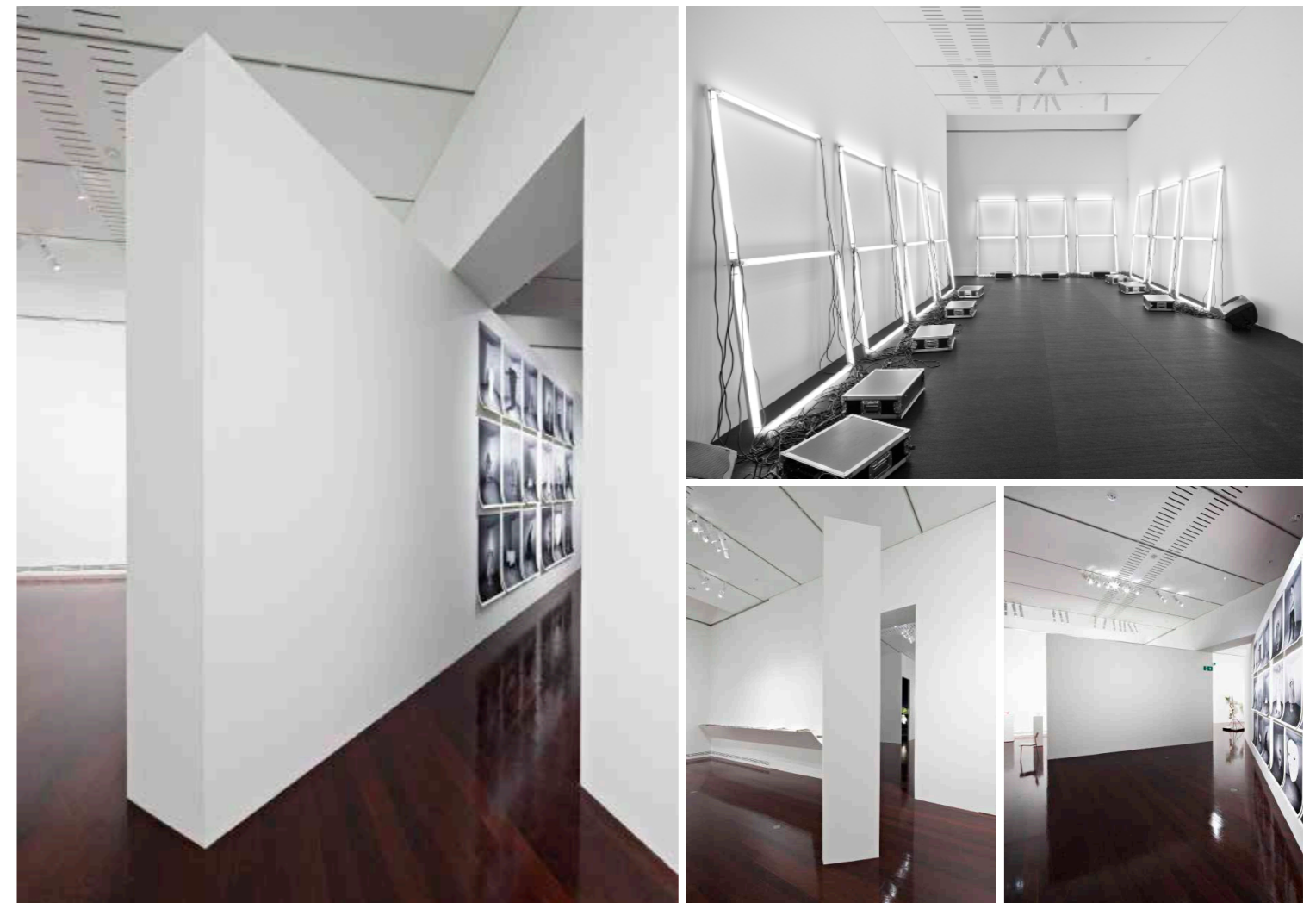
Open between the 8th October and 6th November, DiSotM was part of the 2010 Melbourne International Festival of the Arts.

# Parallel Collisions

## Art Spaces

NORTH TERRACE, ADELAIDE, 2012

CLIENT: ART GALLERY OF SOUTH AUSTRALIA



MvS redesigned the temporary galleries of the Art Gallery of South Australia for “Parallel Collisions” - The 12th Adelaide Biennial of Australian Art. Open March and April 2012.

The design for this exhibition is a tracking shot which journeys through a collection of works in spaces tailored to them.

By creating a series of display walls low enough to run between the adjacent rooms, we transformed the large galleries

into a series of vistas and barriers directing the visitor’s gaze towards, and away from, works as required by the curators.

The show attracted double the visitor numbers of any Adelaide Art Biennial prior.

Installation views featured Robert Cook vs Max Pam, Rob McLeish, Ricky Swallow, Michelle Ussher, Marco Fusinato, Tim Silver and Tom Nicholson.

Curated by Alexie Glass-Kantor and Natasha Bullock.

# Star Voyager

## Art Spaces

ACMI GALLERY, FEDERATION SQUARE MELBOURNE, 2011 - 2012

CLIENT: ACMI

PHOTOGRAPHY:

MARK ASHKANASY



“Star Voyager - Exploring Space on Screen” explores the relationship between space exploration and its representation on screen.

Our design of this exhibition draws explicitly from the motifs of footage and films of human ventures into space.

The project room is clad in NASA-esque gold foil, smaller objects are displayed in an ‘asteroid belt’, films and objects are arranged in

a false perspective space corridor and space suits are choreographed to mimic a famous scene from a space-race movie.

We worked closely with the curators to create spaces that were evocative of the exhibition’s theme.

‘Star Voyager’ was launched at ACMI on 21st of September 2011 by astronaut Rex Walheim and remained open till 29th January 2012.

Star Voyager was short-listed for the Melbourne Design Awards in 2012.

# OverLogo

## Art Works

MELBOURNE CBD, 2003

ARTIST: JAN VAN SCHAIK & LOU WEIS

PHOTOGRAPHY: JAN VAN SCHAIK

CLIENT: CITY OF MELBOURNE



OverLogo is built nostalgia: a giant abacus made of 7,000 play pen spheres that coalesce as a 1980s tram ticket in a lane-way, clearly visible from the offices of 101 Collins Street above.

Yearning for a time when trams were patrolled by conductors who carried leather purses and ticket punchers, OverLogo attempted to ‘validate’ the city by putting a dark and grimy lane-way on the map. This was achieved in spectacular fashion in 2007 when Corporation Lane, its popularity

accelerated by OverLogo, was renamed AC/DC Lane in honour of the band.

While framing the lane-way in the realm of high art, OverLogo was in turn designed to be framed by the ravages of the city.

Vandalised by nightclub goers and battered by garbage trucks it became tattered at its edges, just like the small yellow paper ticket it emulated and augmented.

# Over and Over

## Art Works

ESPLANADE APARTMENTS, ST KILDA

ARTIST: JULIA GORMAN

CLIENT: BECTON

PHOTOGRAPHY:

ALBERT COMPER



This public artwork, developed and documented for artist Julia Gorman, is the rear public face of the Esplanade Apartments in St Kilda by Becton.

The work is an array of steel profiles extracted from photographs of ruined Grecian statues brought back to life by vibrant powder-coated colours.

The figures give an optimistic sense of a crowd of individuals

holding up the building above while the inclusion of a few headless statues adds a touch of the macabre and the ancient.

The figures are designed to give a sense of the diversity of the people of the place while also

commenting on the persistence and universality of the human condition.

Julia Gorman is represented by Arc One Gallery in Flinders Lane Melbourne.

# Café Bourgeois

## Retail

DOCKLANDS MELBOURNE, 2010

CLIENT: CAFE BOURGEOIS

PHOTOGRAPHY:

ALBERT COMPER



Contemporary urban design flourishes despite the most stringent limitations. Everyone wants maximum effect for minimal expense, to stand out while fitting in

“A gargantuan post-Riley Op-Art ripple swirls across two walls, up onto the roof and down across the floor, effecting a continuous architectural synthesis of lights, visuals and ergonomics. It’s a highly economical solution, too, a simple sticky-back vinyl print. Yet the striking photographs don’t do

the subtlety of the interior justice. The juxtapositions effected by the ripple unify the diverse zones of the café, from the dangling hula-hoop spangled with tiny LED string lights, to the display cabinets, jazzing up without overwhelming the space.

One inherent difficulty of designing such spaces requires enhancing function without obtrusiveness: nobody wants to feel that they’re being too-obviously directed this way or that.”

*Justin Clements*

# Sugar Station Retail Outlets

## Retail

MELBOURNE, 2007 - 2012

CLIENT: SUGAR STATION

PHOTOGRAPHY:

ALBERT COMPER



MvS's design expertise enables a larger franchising strategy for this confectionary business which currently has nine stores operating in Melbourne and Canberra.

Sugar Station's confectionary is bright and bold. Our design for their stores' logo (with Studio Round) places the product at the frontline of the graphic and physical identity of the stores.

Each store is designed to work within the design constraints of Westfield, GPT and QIC retail

developments while having distinct design details to set them apart from adjacent tenancies.

The confectionary range of each store is broad and their display and storage required the designing of a complex joinery system incorporating popcorn machines, ice-cream fridges, drinks fridges,

pucker powder dispensers, candy-floss machines and bar-line stands - all sold through multiple till coordinated systems and secured with a CCTV network.

# Scandinavian Freestyle

## Multi Residential

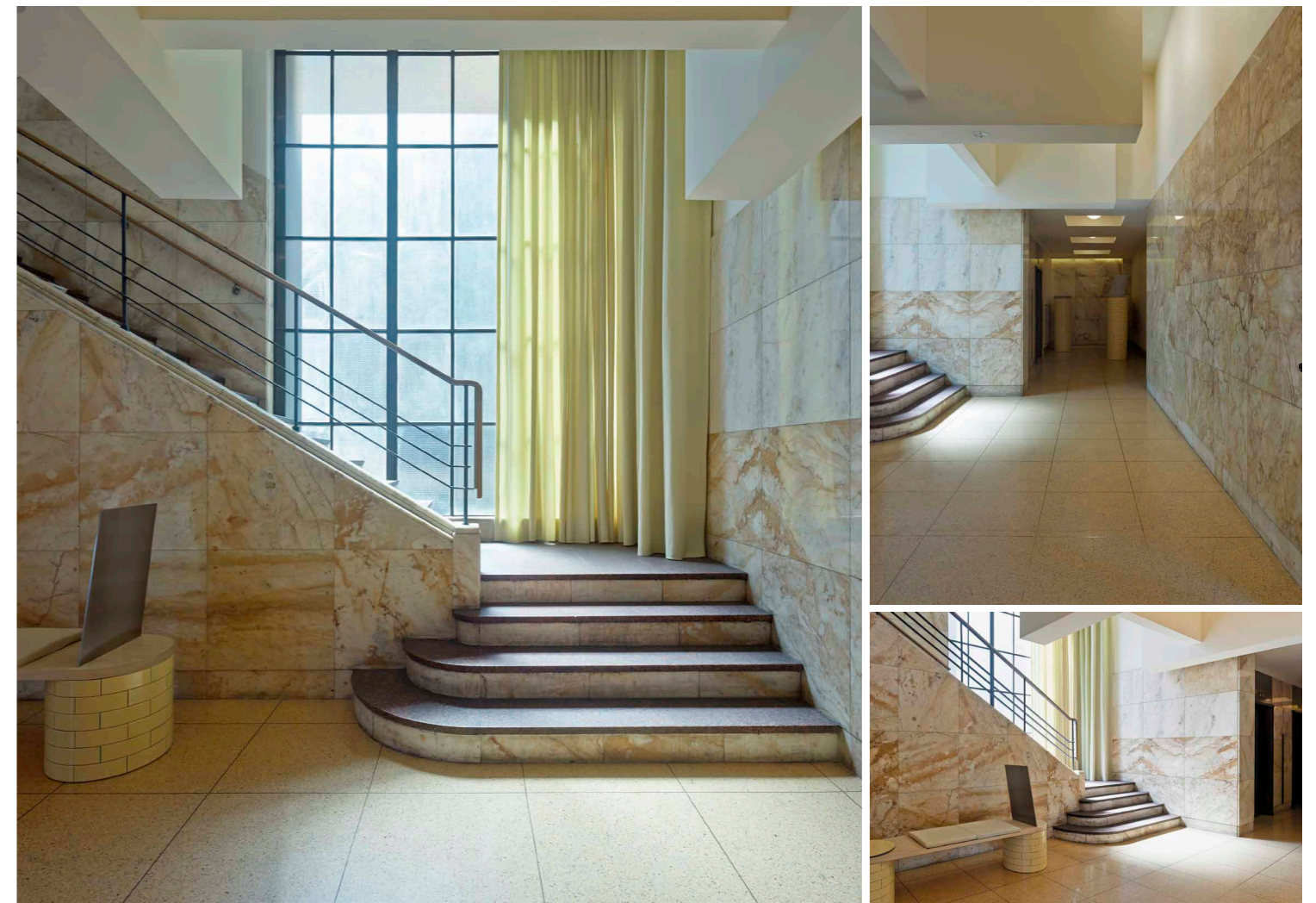
MELBOURNE CBD, 2013

CLIENT: HERO APARTMENTS OWNERS CORPORATION

WITH: FIONA ABICARE

PHOTOGRAPHY:

PETER BENNETTS



A stylish new entry lobby space has been designed for the Hero Apartments by MvS Architects and Fiona Abicare in association.

Completed in 1954, the former Russell Street Telephone Exchange & Post Office designed by the Commonwealth Department of Works is a unique multi-storey CBD building.

Influenced by European Modernism, in particular the Amsterdam School and Scandinavian Freestyle

Classicism, the interlocking unadorned mass of cream-brick features in its 2001 redevelopment -Hero Apartments by Nonda Katsalidis Architects - via intersecting interior vertical planes, structural plates, and green columns. Scandinavian Freestyle develops a language of materiality in relation to the formal qualities and associated

styles present within the foyer's interior. This process activates the foyer by natural light and the spatial and material interconnectivities of its original forms. Objects were designed to enhance aesthetic experiences and for specific functions: seating and mail retrieval, while drapery, upholstery and artwork also contribute to functionality.

# Projects List

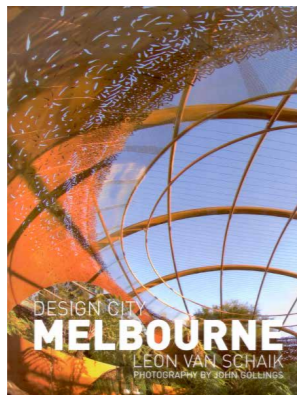


West Facade of Edithvale Seaford Wetlands Discovery Centre

- National Wool Museum visioning and UNESCO alignment
- Bingham's Road Private Art Studio Complex
- Colac Office and Cultural Needs Assessment
- Bell Street House
- Hamilton Gallery Service Review
- Whittlesea Culture Strategy
- Bligh Place Apartment
- Kimberley Center Feasibility Study
- Inner West Creative Industries Hub Research
- Mornington Peninsula Regional Gallery Redevelopment
- Exclusive Mutations Advanced Manufacturing Research
- Wildlife Art Museum of Australia
- Halls Gap Master-plan
- Shepparton Art Museum Feasibility Study
- Castlemaine Cultural Facilities Vision
- St Arnau d Civic Precinct Plan
- Alice Smith School, KL
- Hevea Tower, KL
- LGM Master plan, KL
- RMIT New Academic Street, Melbourne
- Hero Lobby Upgrade, Melbourne
- Dehan Hotel City, Tianjin
- Star Voyager, ACMI
- Parallel Collisions
- We used to talk about love
- Dying in Spite of the Miraculous
- Super-Yacht City, Qinhuangdao
- Emoh Ruo, London / Mildura
- Eastern Park & Geelong Botanical Gardens Visitor's Centre
- Cafe Bourgeois, Melbourne Docklands
- About Face, 2009 Think Brick Competition
- 59a Bourke Street, Melbourne

- Apartment 905, Melbourne
- The New Harbour Esplanade, Melbourne Docklands
- Palm Diera Corniche, Dubai
- Sugar Station Confectionary chain, Melbourne
- Carlton Brewery Development, Melbourne
- Australian Wildlife Centre, Healesville Sanctuary, Melbourne
- Entrance Pavilion, Healesville Sanctuary, Melbourne
- Wetlands Discovery Centre, Edithvale, Victoria
- Wetlands Discovery Centre Master Plan, Edithvale, Victoria
- The Keys to Mildura
- Vietnamese Cultural & Community Centre, Maribyrnong
- Valley Lake EcoHousing, Niddrie
- Datum Regalia, KL
- Sustainable Housing (International Competition, Finalist)
- Steaming House, Beijing Art Biennale
- City of Skyscrapers (Competition, Winner), Ljubljana
- Saatchi & Saatchi, Lobby/Gallery, Sydney
- Millennium Hilton Ballroom & Function Centre, Bangkok
- Millennium Hilton Health Club, Bangkok
- Deakin University Courtyard, Burwood
- OverLogo Installation, Melbourne
- Over and Over Installation, Melbourne
- Melbourne University Museum Courtyard, Melbourne
- Victorian College of the Arts Centre for Ideas, Melbourne
- Victorian College of the Arts Library, Melbourne
- Victorian College of the Arts Union Facilities & Cafeteria, Melbourne
- Docklands Design Frameworks, Vic Harbour, Yarra Waters and North West Precincts, Melbourne
- University of Sydney Public Domain (Competition, Finalist) Sydney
- Grand Egyptian Museum (Competition, Exhibited), Egypt
- Shuishhe Waterfront Park (Competition) Taiwan
- Yantai Coal Economic College (Competition, Finalist) China
- Yarra's Edge Windscreens, (Competition, Finalist) Melbourne

# Exhibitions & Publications



- 2015 “Africa Design Magazine”, Alice Smith School
- 2015 “Arch Daily”, Alice Smith School
- 2015 “Architecture smd Culture” Korea, Alice Smith School
- 2015 “Architecture Australia”, Alice Smith School
- 2014 “Augmented Australia”, The Australia Pavillion, The Venice Biennale of Architecture
- 2014 “Luchbox Architect” Alice Smith School
- 2013 “Convergence” Wattle Avenue House
- 2013 “Cities of Hope” RMIT Storey Hall Gallery
- 2013 “New Suburban” Stuart Harrison, published by Thames and Hudson
- 2012 “Momentum. New Victorian Architecture” The Office of Victorian Government Architect, published by Miegunyah Press
- 2012 “Wattle Avenue House” Robert Nelson , Houses Magazine, Issue 88 2012
- 2012 “Leaning to Past Designs” Ann Pilmer, The Age Newspaper, August 19th 2012
- 2012 “Inspired by Region: House wins award” Allyson Fonseca, Sunraysia Daily, August 15th 2012
- 2012 “Inspired by the Hides of Marsh” Joe Rollo, The Age Newspaper, April 13th 2012
- 2012 “Wandering Between the Lines” Dylan Rainforth, The Age Newspaper, April 4th 2012
- 2012 “With All the Views” Paul Carter, Architecture Australia Volume 101 March April 2012
- 2012 “Our “Home-for-All” Design ideas, plans and all” Catalogue for “A See-Worthy Vessel” Imbari, Toyo Ito Museum of Architecture
- 2010 “Machinic Processes” 2010 Beijing Biennale
- 2010 “Emoh Ruo, The Global Practices of Australian Architecture” Bridge Gallery, London
- 2009 Post Oil Cities “Reverse Engineering” by Jan van Schaik
- 2009 “Transformations” Moving Galleries, Melbourne
- 2009 “Razmisleki o arhitekturi, razmisleki o arhitektih”, DESSA Gallery, Ljubljana
- 2009 “Abundant Highlights Exhibition”, Object Gallery, Sydney
- 2008 “Abundant”, Australian Pavilion, Venice Architecture Biennale
- 2008 “Homo Faber”, Museum of Victoria
- 2008 “(Im)material Processes”, 2008 Beijing Biennale
- 2008 “Unified Design” by Arup Associates, publisher Wiley
- 2007 “Next Wave” by Davina Jackson, publisher Thames & Hudson
- 2006 “Design City Melbourne” by Leon van Schaik, publisher Wiley
- 2006 Architecture Australia “Australian Wildlife Health Centre” Mar/Apr
- 2006 Mark Magazine (Amsterdam) Issue 02 “Letter from Melbourne”
- 2006 “Self Sufficient Housing” publisher Actar
- 2006 “Ten Plus One”
- 2005 “10x10\_2 100 Architects, 10 Critics” by Davina Jackson, publisher Phaidon
- 2005 “Mastering Architecture” by Leon van Schaik, publisher Wiley Academy
- 2005 Architectural Review Australia “AR Next”
- 2005 City of Innocence “An urban wager” by Jan van Schaik
- 2005 “Pavilions for New Architecture” Curators Geraldine Barlow and Max Delany
- 2004 Architecture Australia “Saying and Doing” Mar/Apr
- 2004 Colorfulness Magazine (Beijing) “Architecture Expression on City Spirit” Oct
- 2004 Vogue Living “Impressed Metal” Sep/Oct
- 2004 “Downshifters” Jan van Schaik and Paul Minifie
- 2004 “Easily Flooded Architecture” Alain Danilet, Marie Christine Lorier and Sophie Houdart
- 2004 Designing for Success: The Office, Images Publishing, Melbourne.

# Recognition



- 2018 Australian Institute of Architects national award, the Daryl Jackson Award for Educational Architecture
- 2018 Australian Institute of Architects national award for Urban Design
- 2018 Australian Institute of Architects Victorian award, the Melbourne Prize
- 2018 Australian Institute of Architects Victorian award, the Victorian Architecture Medal
- 2018 Australian Institute of Architects Victorian award, the Henry Bastow Award for Educational Architecture
- 2018 Australian Institute of Architects Victorian award, the Joseph Reed Award for Urban Design
- 2018 Australian Institute of Architects Victorian award, the Award for Interior Architecture
- 2018 Australian Institute of Architects Victorian award, the Award for Sustainable Architecture. RMIT New Academic Street (with Lyons, NMBW, HAW, Peter Maddison, and TCL)
- 2015 Award for Community Engagement in the National Local Government awards The St Arnaud Street Museum
- 2015 PAM Award GOLD Category 13 COLLABORATION Alice Smith School Jalan Bellamy (with iPartnership.LCW)
- 2012 Premier’s Design Award Edithvale Seaford Wetlands and Discovery Centre
- 2012 Master Builders Association - Excellence in Construction Award Victoria, Best Sustainable Energy Project Edithvale Seaford Wetlands and Discovery Centre
- 2012 Australian Institute of Architects award, New Public Architecture Edithvale Seaford Wetlands and Discovery Centre
- 2012 Australian Institute of Architects award, Residential Alterations and Additions Wattle Avenue House
- 2008 Premier’s Design Award for Cultural Architecture: Australian Wildlife Health Centre, Healesville
- 2007 Grocon CUB Ideas Competition. Carlton Brewery: Winner
- 2007 Te Wero Bridge Competition Auckland, New Zealand: Finalist
- 2007 Preshil Library Competition Melbourne: Finalist
- 2006 RAIA William Wardle Institutional Architecture Award: Australian Wildlife Health Centre, Healesville
- 2004 Royal Australian Institute of Architects Institutional Architecture Award: Victorian College of the Arts - Centre for Ideas, Melbourne
- 2003 RAIA/Austrade Development Award. For export to the China market
- 2003 University of Sydney Public Domain International Competition, Sydney: Finalist
- 2002 Australasian Campus Union Manager’s Association Award for Best Facility Renovation: RMIT Union Hub, Melbourne
- 2002 Yantai Coal Economic College Design Competition Yantai, China: Finalist
- 2002 Yarra’s Edge Windscreens Design Competition, Melbourne: Finalist
- 2000 Marina Line International Design Competition, Singapore: Finalist

# Referees (public projects)

Prof. Su Baker

University of Melbourne  
Pro Vice-Chancellor (Engagement)  
234 St Kilda Rd, Melbourne 3000  
t: +61 3 9035 3760  
e: su.baker@unimelb.edu.au

Chris Hewison

RMIT University  
Property Services Executive Director  
449 Swanston Street, Melbourne 3000  
t: +61 9925 2428  
e: chris.hewison@rmit.edu.au

Stefano de Pieri

Mildura Brewery  
Owner  
16 Langtree Avenue, Mildura 3500  
t: + 61 3 5022 0881  
e: stefano@stefano.com.au

Wayne Charlton

Melbourne Water Corporation  
Project Manager  
P.O. Box 4342 Melbourne 3001  
t: + 61 3 9679 7654  
e: wayne.charlton@melbournewater.com.au

Mike David

Senior Project Officer  
Capital Projects, Facilities Services Division  
Locked Bag 20000, Geelong, VIC 3220  
t: +61 3 9244 6244  
e: mike.david@deakin.edu.au

# Referee Reports



PO Box 74  
Parkville  
Vic 3052  
Australia  
T: 61 3 9285 9300  
F: 61 3 9285 9330  
www.zoo.org.au

23 September 2010

RE: Minifie van Schaik Architects (MvS)

To whom it may concern,

Zoos Victoria is a proud owner and occupier of the Australian Wildlife Health Centre at Healesville Sanctuary designed by Minifie Nixon, now Minifie van Schaik.

AWHC is part veterinary clinic for Australian wildlife, part educational space where we simultaneously care for native fauna and educate the public through demonstration and instruction.

The MvS design cleverly incorporates a giant ventricle at the heart of the building which both acts as a cooling device for the building and advertises the building's function where it neatly pops through the roof.

Visitors to the sanctuary are enamoured by the patterned block work facade and the shaded internal courtyard within which children play and learn.

The project has weathered well in the four years since its completion. Recently MvS was invited to exhibit the project at the Australian Embassy Gallery in Washington D.C. Entitled *BioDiverCity* and for which we worked with them to prepare a beautiful new series of photographs.

Given the opportunity we would gladly engage Minifie van Schaik again.

Yours sincerely,

  
John Gibbons


Director – Healesville Sanctuary ,



<b>Werribee Open Range Zoo</b>	<b>Melbourne Zoo</b>	<b>Healesville Sanctuary</b>
PO Box 460	PO Box 74	PO Box 248
Werribee	Parkville	Healesville
Vic 3030	Vic 3052	Vic 3777
Australia	Australia	Australia
T: 61 3 9731 9600	T: 61 3 9285 9300	T: 61 3 5957 2800
F: 61 3 9731 9644	F: 61 3 9285 9330	F: 61 3 5957 2870

ABN: 96 913 959 053

# Referee Reports



23 September 2012

TO WHOM IT MAY CONCERN

RE: MvS Architects


Melbourne Water worked with MvS Architects between 2006 and 2012 on the Edithvale-Seafood Wetlands Discovery Centre (ESWDC), a flagship ESD interpretive design centre whose purpose is to provide general education about, and views of, the Ramsar listed Edithvale-Seafood wetlands, including its flora and fauna.

MvS Architects were engaged as the principle architecture consultant whose scope covered master-planning, community engagement, schematic design, design development, contract documentation, contract administration, and liaison with landscape architects, exhibition designers, planning consultants, structural/services/ESD engineers and building surveyors.


MvS Architects patiently and skilfully managed the conflicting demands of the various project stakeholders, changing budgets and the complexities of innovation in Environmentally Sustainable Design to deliver a project of which meets the needs and ambitions of Melbourne Water and its clients.

We are very proud, also, to be the owners and occupants of a building that was awarded an Australian Institute of Architects award for Public Architecture in June 2012, a Master Builders Association Award in August 2012 and also the Premier's Design Award in September 2012.

Yours sincerely,



WAYNE CHARLTON  
PROJECT MANAGER



Melbourne Water Corporation  
100 Wellington Parade  
East Melbourne VIC 3002 Australia  
PO Box 4342 Melbourne VIC 3001 Australia  
Telephone 131 722  
Facsimile 03 9235 7200  
ABN 81 945 386 953  
Printed on Australian 100% recycled paper

# Referee Reports

Grocon Property Services (NSW) Pty Ltd  
ABN 72 094 605 222 152 Gloucester Street Sydney NSW  
2000 Australia. GPO Box 498 Sydney NSW 2001 Australia  
Telephone +612 8249 7000 Facsimile +612 9247 7768



22 September 2010

To whom it may concern,

In 2007 an expert panel, with representatives from the Department of Sustainability and Environment, RMIT University and Grocon, awarded Minifie Nixon Architects the commission to design an eleven storey 1500m<sup>2</sup> floor plate building of mixed use comprising residential and retail components, at Grocon's Carlton Brewery Development.

A key factor in the decision to award them the contract was their stated ability to work within, and contribute to, the development of a larger precinct which has civic ambitions for the city. They have risen to their claims.

In their capacity as lead consultant they have thus far developed and subsequently presented a design which boldly addresses the Swanston Street edge and the substantial public realm component of the precinct.

Their design has dealt with the conflicting demands of Universal Design, five star Greenstar requirements and of course the careful attention to budget requirements.

We look forward to working with them on the next phase of the project and congratulate them on their long overdue renaming to Minifie van Schaik Architects.

Yours sincerely,



Ari Petrou  
Manager – New Developments, Grocon Group

# Referee Reports



29 May 2012

Jan van Schaik  
Director  
Minifie van Schaik Architects  
Top Floor, 181 Swanston Street  
MELBOURNE VIC 3000

Dear Jan

I would like to extend my appreciation to you and to Minifie van Schaik for your significant role in supporting the 12<sup>th</sup> Adelaide Biennial of Australian Art - *Parallel Collisions*, curated by Natasha Bullock and Alexie Glass Kantor, at the Art Gallery of South Australia between 2 March and 29 April 2012.

The biennial exceeded our expectations with audience attendances reaching above an unprecedented 104,000 people. The exhibition introduced contemporary art to new audiences, due primarily to the intelligently curated interventions in the Elder Wing of Australian Art. Furthermore the transformation of the temporary exhibitions galleries, made possible with your guidance and vision, also enriched the audience's experience of the art of our time.

The editorial, art critical and scholarly responses to the biennial were numerous, and all acknowledged the intellectual and curatorial nous underpinning the exhibition. In addition, the productive relationships that developed between the artists, curators, our curatorial and registration teams here at the Gallery and yourself, are further evidence of your professionalism and commitment. We are most grateful for your rigorous attention to detail and for your sustained passion for *Parallel Collisions*. We enjoyed working with you enormously and wish you the very best with your future endeavours.

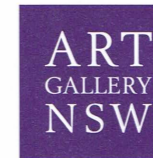
With best wishes

NICK MITZEVICH  
Director

ART GALLERY OF SOUTH AUSTRALIA NORTH TERRACE ADELAIDE SOUTH AUSTRALIA 5000  
TELEPHONE 61 8 8207 7000 FACSIMILE 61 8 8207 7070 [www.artgallery.sa.gov.au](http://www.artgallery.sa.gov.au)



# Referee Reports



DIRECTOR MICHAEL BRAND

6 February 2013

Jan van Schaik  
Director  
Minifie van Schaik Architects  
Top floor, 181 Swanston Street  
Melbourne VIC 3000

Dear Jan

***We used to talk about love: Balnaves contemporary photomedia*** is currently on display at the Art Gallery of New South Wales and I am writing to express my sincere thanks for the support you have given to us throughout the preparation and realisation of this project.

The exhibition has been applauded widely by the arts community, the media and by the general public. Your support has made a substantial contribution to the success of the project and the publication.

I would like to take this opportunity to express our sincere gratitude and enclose two complimentary copies of the exhibition catalogue.

Best wishes

Michael Brand  
Director

ART GALLERY OF NEW SOUTH WALES  
Art Gallery Road The Domain Sydney NSW 2000 Australia  
TEL +61 2 9225 1725 FAX +61 2 9225 1701 [artmail@ag.nsw.gov.au](mailto:artmail@ag.nsw.gov.au) [www.artgallery.nsw.gov.au](http://www.artgallery.nsw.gov.au)

# Insurance & Company Details

## Public Liability Insurance

Policy provider	IBNA Gold Insurance
Policy number	SMXo17798o15
Public liability limit any one claim	\$ 20,000,000
Products liability in the aggregate	\$ 20,000,000
Goods in custody and control	\$ 100,000
Excess	\$ 250
Expiry	15.10.2022

## Professional Indemnity Insurance

Policy provider	AAI Limited t/a Vero Insurance
Policy number	PIA - 20082
Liability limit any one claim	\$ 5,000,000
Liability limit in the aggregate	\$ 30,000,000
Optional Extensions	Reinstatement covered
Retroactive date	Unlimited
Expiry	13.03.2022

## Company Information

Minifie van Schaik Pty Ltd  
ACN 095 904 466  
ABN 55 095 904 466

## Architects Registered in Victoria

MvS Architects C50 646

# Contact Details



**MvS Architects**  
Top Floor, 181 Swanston Street  
Melbourne, Victoria, 3000, Australia  
office@mvsarchitects.com.au  
mvsarchitects.com.au  
T+ 61 (0) 411 724 427

